



[CLIMATE CONTROL SYSTEMS / PRODUCT INFORMATION](#)

# **AIR CONDITIONING PRODUCTS PARTS, FITTINGS AND TECHNICAL DATA**

<b>1</b>	<b>Air Conditioning</b>	<b>4</b>
	<b>a. Evaporators</b>	<b>4</b>
	VAC units	4
	HVAC units	9
	EHVAC units	16
	<b>b. Rooftop units</b>	<b>20</b>
	VAC units	20
	HVAC units	24
	EHVAC units	26
	<b>c. Condensers</b>	<b>27</b>
	Condenser plates	27
	Ventilated condensers	28
	Condenser units	30
	<b>d. Compressors</b>	<b>32</b>
	Belt driven applications	32
	Hydraulic driven applications	34
	Electrically driven applications	34
	<b>e. Pressurization</b>	<b>36</b>
	Pressurization system	36
	Air filters	36
	Overpressure flaps	37
	Leak generator	37
<b>2</b>	<b>Blower heaters</b>	<b>38</b>
	<b>a. Water blower heaters</b>	<b>39</b>
	<b>b. Electric blower heaters</b>	<b>50</b>
<b>3</b>	<b>Ventilation</b>	<b>58</b>
	<b>a. Roof ventilators</b>	<b>58</b>
	Ventilators	58
	Mounting plates	59
	Air diffusers	60
	<b>b. Wall ventilators</b>	<b>61</b>
	<b>c. Axial fans</b>	<b>62</b>
	<b>d. Radial blowers</b>	<b>64</b>
	Single radial blowers	64
	Double radial blowers	65

<b>4</b>	<b>Accessories</b>	<b>66</b>
	<b>a. Air outlets and air diffusion</b>	<b>66</b>
	Evaporator and blower heaters	66
	Rooftop units	69
	Louvers	71
	Rectangular louvers	82
	Grilles	84
	Connectors	87
	Butterfly junctions	87
	Reducers	88
	Y connectors	89
	Air ducts	90
	<b>b. Control units</b>	<b>91</b>
	Remote controls	91
	Control panels	91
	Switches	94
	Control accessories	95
	<b>c. Air conditioning</b>	<b>96</b>
	Receiver dryers	96
	Pressure switches	97
	Expansion valves	98
	Adapter sets	98
	Spare parts	100
	Regulation	100
	Miscellaneous accessories	102
	<b>e. Water pumps</b>	<b>103</b>
	<b>f. Valves</b>	<b>104</b>
	Mechanical heating valves	104
	Proportional heating valves	105
	Solenoid valves	105
	<b>g. Water system connectors</b>	<b>106</b>
	Heating bulkheads	106
	Duck bill valves	106
	Heating connectors	107
	<b>h. Pipes</b>	<b>109</b>
	Heater hoses	109
	A/C hoses	110
	Clamps	110
	Protective ducts	111

# 1. AIR CONDITIONING – EVAPORATORS

## Model

VAC	Blower and evaporator
HVAC	Blower, radiator and evaporator
EHVAC	Blower, PTC resistor and evaporator

## Outlet panel

E	Without outlet panel
G	Grille
ED2	2-outlet panel
ED4	4-outlet panel
ED6	6-outlet panel
KB	Adjustable and closable outlets, rotating without the core
KC	Adjustable and closable outlets, rotating with the louver core
KG	Adjustable outlets with grid
FAI	Control unit and air outlets

## VAC UNITS – HORIZONTAL



### Compact EV02 VAC

Model	E	ED4	KC	FAI		
Cooling performance kW	2.5					
Air flow m <sup>3</sup> /h	230					
Electrical consumption W	100					
Weight kg	3	3.5	3.2	3.4		
Ventilation speed levels	3					
Dimensions l x w x h mm	196 x 282 x 133	241 x 282 x 133	212 x 282 x 133	268 x 282 x 133		
Compatible refrigerant	R134a / R1234yf					
Blower voltage V	12	12	24	12	12	24
Part number	830012220000	830012220002	830012220511	830012220005	830012220003	830012220103

Antifreeze thermostat not included.

## VAC UNITS – HORIZONTAL



### Super K VAC

Model	E		E ETXV*		ED4		KC		G	
Cooling performance	kW				4					
Air flow	m <sup>3</sup> /h				440					
Electrical consumption	W				100					
Weight	kg	3.1	3.7	4.1	4		3.3		3.1	
Ventilation speed levels					3					
Dimensions l x w x h	mm	216 x 368 x 137			268 x 368 x 137		250 x 368 x 137		220 x 368 x 137	
Compatible refrigerant					R134a / R1234yf					
Blower voltage	V	12	24	12	12	24	12	24	12	24
Part number		830012217010	830012217110	830012217010	830012217011	830012217111	830012217015	830012217115	830012217012	830012217112

Antifreeze thermostat included.  
\*Electrical thermal expansions valve integrated.



### Kab VAC

Model	Kab VAC 4		Kab VAC 5.7		Kab VAC 9			
Cooling performance	kW		4		5.7		9	
Air flow	m <sup>3</sup> /h		170		265		370	
Electrical consumption	W		100		180		360	
Weight	kg		6		4.8		9	
Ventilation speed levels					3			
Dimensions l x w x h	mm	138 x 590 x 133		161 x 590 x 381		169 x 590 x 381		
Compatible refrigerant					R134a / R1234yf			
Blower voltage	V	12	24	12	24	12	24	
Part number		830012217122	830012217222	830012212511	830012212611	830012219304	830012219404	

Antifreeze thermostat included.

# EVAPORATORS

## VAC UNITS – HORIZONTAL



### Compact EV04 VAC

<b>Model</b>	E ETXV* Ambulance	
<b>Cooling performance</b> kW	5.5	
<b>Air flow</b> m <sup>3</sup> /h	480	
<b>Electrical consumption</b> W	171	
<b>Weight</b> kg	6.2	
<b>Ventilation speed levels</b>	3	
<b>Dimensions l x w x h</b> mm	279 x 595 x 114	
<b>Compatible refrigerant</b>	R134a / R1234yf	
<b>Blower voltage</b> V	12	
<b>Part number</b>	830012220512	

Antifreeze thermostat included.

\* Electrical thermal expansions valve integrated.



### Kool 2 VAC

Model	E		ED6		ED6 ETXV*	KC		FAI	
<b>Cooling performance</b> kW					5.7				
<b>Air flow</b> m <sup>3</sup> /h					520				
<b>Electrical consumption</b> W					180				
<b>Weight</b> kg	4.8	4.3	4.8	4.7	4.2	4.8	4.8	4.6	5.3
<b>Ventilation speed levels</b>					3				
<b>Dimensions l x w x h</b> mm	293 x 384 x 158	261 x 384 x 158	306 x 384 x 158			293 x 384 x 158		309 x 476 x 158	
<b>Compatible refrigerant</b>					R134a / R1234yf				
<b>Blower voltage</b> V	12	24	12	24	24	12	24	12	24
<b>Part number</b>	830012212204	830012212350	830012212251	830012212351	830012212515	830012212204	830012212304	830012212252	830012212352

Antifreeze thermostat not included.

\* Electrical thermal expansions valve integrated.



### Falcon VAC

Model	E		E ETXV*		ED6		KC		FAI	
Cooling performance	kW				9					
Air flow	m <sup>3</sup> /h				725					
Electrical consumption	W				360					
Weight	kg	7	6.7	7.3	7	7.3	7		7.6	
Ventilation speed levels					3					
Dimensions l x w x h	mm	296 x 432 x 167			341 x 432 x 167		328 x 432 x 167		335 x 497 x 167	
Compatible refrigerant					R134a / R1234yf					
Blower voltage	V	12	24	12	24	12	24	12	24	
Part number		830012219010	830012219111	830012219045	830012219011	830012219111	830012219008	830012219108	830012219038	830012219138

Antifreeze thermostat included.

\*Electrical thermal expansions valve integrated.



### HK EVO4 VAC

Model	E		KB	
Cooling performance	kW		10.7	
Air flow	m <sup>3</sup> /h		1,300	
Electrical consumption	W		220	
Weight	kg	10.5	10.7	
Ventilation speed levels			3	
Dimensions l x w x h	mm	334 x 780 x 120		371 x 780 x 120
Compatible refrigerant			R134a / R1234yf	
Blower voltage	V	12	24	12
Part number		830012222002	830012222102	830012222004

Antifreeze thermostat not included.



# EVAPORATORS

## VAC UNITS – VERTICAL



### VK3 VAC

<b>Model</b>	FAI		
<b>Cooling performance</b> kW	3		
<b>Air flow</b> m <sup>3</sup> /h	300		
<b>Electrical consumption</b> W	125		
<b>Weight</b> kg	5.3		6.3
<b>Ventilation speed levels</b>	3		
<b>Dimensions l x w x h</b> mm	177 x 173 x 555		
<b>Compatible refrigerant</b>	R134a / R1234yf		
<b>Blower voltage</b> V	12		24
<b>Part number</b>	830012224003		830012224103

Antifreeze thermostat included.



### VK9 VAC

<b>Model</b>	E rear outlet		FAI rear outlet	
<b>Cooling performance</b> kW	8		6.5	
<b>Air flow</b> m <sup>3</sup> /h	670		520	
<b>Electrical consumption</b> W	300			
<b>Weight</b> kg	6.1		5.8	
<b>Ventilation speed levels</b>	3			
<b>Dimensions l x w x h</b> mm	174 x 401 x 360		174 x 408 x 453	
<b>Compatible refrigerant</b>	R134a / R1234yf			
<b>Blower voltage</b> V	12	24	12	24
<b>Part number</b>	830012225002	830012225102	830012225005	830012225105

Antifreeze thermostat included.



## HVAC UNITS – HORIZONTAL



### Super K HVAC

Model	E		ED4		KC		G		Box ED4		
Cooling performance	kW				3.5						
Heating performance	kW				4.3						
Air flow	m <sup>3</sup> /h				440						
Electrical consumption	W				100						
Weight	kg	3.3	3.8	3.4	3.8	4.1	3.9	4	4.6	5.3	
Water connection	∅ mm	16									
Ventilation speed levels		3									
Dimensions l x w x h	mm	216 x 368 x 137		268 x 368 x 137		250 x 368 x 137		220 x 368 x 137		402 x 429 x 147	
Compatible refrigerant		R134a / R1234yf									
Blower voltage	V	12	24	12	24	12	24	12	24	12	24
Part number		830012217000	830012217100	830012217001	830012217101	830012217014	830012217114	830012217002	830012217102	830012217016	830012217116

Antifreeze thermostat included.



### Kab HVAC

Model	Kab HVAC 3.5 / 4.3		Kab HVAC 4.5 / 6.6		Kab HVAC 7.7 / 10		
Cooling performance	kW		3.5		4.5		7.7
Heating performance	kW		4.3		6.6		10
Air flow	m <sup>3</sup> /h		170		265		370
Electrical consumption	W		100		180		360
Weight	kg	6.5	6		7.8		9.6
Water connection	∅ mm	16					
Ventilation speed levels		3					
Dimensions l x w x h	mm	138 x 590 x 381		161 x 590 x 381		169 x 590 x 381	
Compatible refrigerant		R134a / R1234yf					
Blower voltage	V	12	24		12		24
Part number		830012217020	830012217120		830012212048		830012212148
					830012219201		830012219301

Antifreeze thermostat included.

# EVAPORATORS

## HVAC UNITS – HORIZONTAL



### Kool 2 HVAC

Model	E		ED6		KC		KC white		KG		FAI	
Cooling performance	kW				4.5							
Heating performance	kW				6.6							
Air flow	m <sup>3</sup> /h				520							
Electrical consumption	W				180							
Weight	kg	4.7	2.4	5	4.7	2.8	4.8	4.8	4.2	5.1		
Water connection	∅ mm	16										
Ventilation speed levels		3										
Dimensions l x w x h	mm	261 x 384 x 158		306 x 384 x 158		293 x 384 x 158				309 x 476 x 158		
Compatible refrigerant		R134a / R1234yf										
Blower voltage	V	12	24	12	24	12	24	12	12	12	24	
Part number		830012212200	830012212300	830012212201	830012212301	830012212203	830012212303	830012212206	830012212205	830012212202	830012212302	

Antifreeze thermostat not included.



### Falcon HVAC

Model	E		ED6		KC		KC white	FAI		Multifluks*		
Cooling performance	kW				7.7							
Heating performance	kW				10							
Air flow	m <sup>3</sup> /h				725							
Electrical consumption	W				360							
Weight	kg	7	6.9	7	6.8	10.5	6.7	7.6	7.6			
Water connection	Ø mm					16						
Ventilation speed levels					3							
Dimensions l x w x h	mm	296 x 432 x 167		341 x 432 x 167		328 x 432 x 167		335 x 497 x 167		366 x 432 x 167		
Compatible refrigerant	R134a / R1234yf											
Blower voltage	V	12	24	12	24	12	24	24	12	24	12	24
Part number		830012219000	830012219100	830012219001	830012219101	830012219007	830012219107	830012219108	830012219036	830012219136	830012219025	830012219125

Antifreeze thermostat included.

\* Equipped with air flaps.



### Falcon Plus HVAC

Model	E		ED6		KC		
Cooling performance	kW		9				
Heating performance	kW		10				
Air flow	m <sup>3</sup> /h		870				
Electrical consumption	W		430				
Weight	kg	6.8			6.9		
Water connection	Ø mm					16	
Ventilation speed levels					3		
Dimensions l x w x h	mm	296 x 432 x 167		341 x 432 x 167		328 x 432 x 167	
Compatible refrigerant	R134a / R1234yf						
Blower voltage	V	12	24	12	24	12	24
Part number		830012219032	830012219132	830012219033	830012219133	830012219034	830012219134

Antifreeze thermostat included.

# EVAPORATORS

## HVAC UNITS – HORIZONTAL



### HK EVO4 HVAC

Model		E	E ETXV*	KB	FAI Headliner
Cooling performance	kW		8.6		
Heating performance	kW		9.5		
Air flow	m <sup>3</sup> /h		1,300		
Electrical consumption	W		220		
Weight	kg	9.8	9.7	10	22.4
Water connection	∅ mm		16		
Ventilation speed levels			3		
Dimensions l x w x h	mm	334 x 780 x 120		371 x 780 x 120	454 x 897 x 135
Compatible refrigerant		R134a / R1234yf			
Blower voltage	V	12	24	12	
Part number		830012222001	830012222101	830012222017	830012222009
					830012222012

Antifreeze thermostat not included.

\* Electrical thermal expansions valve integrated.

## HVAC UNITS – VERTICAL



### VK3 HVAC

<b>Model</b>		FAI
<b>Cooling performance</b>	kW	3
<b>Heating performance</b>	kW	3.2
<b>Air flow</b>	m <sup>3</sup> /h	303
<b>Electrical consumption</b>	W	125
<b>Weight</b>	kg	6.4
<b>Ventilation speed levels</b>		3
<b>Dimensions l x w x h</b>	mm	177 x 173 x 555
<b>Compatible refrigerant</b>		R134a / R1234yf
<b>Blower voltage</b>	V	12
<b>Part number</b>		830012224001

Antifreeze thermostat included.



### MKO HVAC

Model	E		ED4	
<b>Cooling performance</b>	kW	4.3		
<b>Heating performance</b>	kW	3.3		
<b>Air flow</b>	m <sup>3</sup> /h	435		
<b>Electrical consumption</b>	W	220		
<b>Weight</b>	kg	4.7	4.4	4.7 / 4.5
<b>Water connection</b>	∅ mm	16		
<b>Ventilation speed levels</b>		3		
<b>Dimensions l x w x h</b>	mm	160 x 257 x 378		160 x 257 x 455
<b>Compatible refrigerant</b>		R134a / R1234yf		
<b>Blower voltage</b>	V	12	24	12 / 24
<b>Part number</b>		830012219031	830012219131	830012219055 / 830012219191

Antifreeze thermostat not included.

# EVAPORATORS

## HVAC UNITS – VERTICAL



### Kartel HVAC

Model	E		ED6	
Cooling performance	kW		4.5	
Heating performance	kW		6.1	
Air flow	m <sup>3</sup> /h		370	
Electrical consumption	W		205	
Weight	kg	5	4.9	
Water connection	Ø mm		16	
Ventilation speed levels			3	
Dimensions l x w x h	mm		463 x 166 x 209	
Compatible refrigerant	R134a / R1234yf			
Blower voltage	V	12	12	24
Part number	830012200041		830012200040	830012200140

Antifreeze thermostat not included.



### MK1 HVAC

Model	E		ED6		ED6*	
Cooling performance	kW		7			
Heating performance	kW		7.8			
Air flow	m <sup>3</sup> /h		700			
Electrical consumption	W		360			
Weight	kg	7.6	7.3	7.6	7.3	3.5
Water connection	Ø mm		16			
Ventilation speed levels			3			
Dimensions l x w x h	mm		160 x 428 x 444		167 x 428 x 514	
Compatible refrigerant	R134a / R1234yf					
Blower voltage	V	12	24	12	24	12
Part number	830012219013		830012219113	830012219022	830012219122	830012219016

Antifreeze thermostat included.

\*Without flap


**VK9 HVAC**

Model	E lateral outlet		E rear outlet		KC rear outlet		FAI rear outlet	
Cooling performance kW	8				6.5			
Heating performance kW	10				7.5			
Air flow m <sup>3</sup> /h	670				520			
Electrical consumption W			300					
Weight kg	5		6.6		7		7.4	
Water connection Ø mm			16					
Ventilation speed levels			3					
Dimensions l x w x h mm	174 x 478 x 360		174 x 402 x 360		174 x 408 x 453			
Compatible refrigerant			R134a / R1234yf					
Blower voltage V	12	24	12	24	12	24	12	24
Part number	830012225050	830012225150	830012225053	830012225153	830012225054	830012225154	830012225055	830012225155

Antifreeze thermostat included.



# EVAPORATORS

## EHVAC UNITS – HORIZONTAL



### Super K EHVAC

<b>Model</b>	E							
<b>Cooling performance</b> kW	2							
<b>Heating performance</b> kW	2		4					
<b>PTC voltage</b> V	24	48 – 59			60 – 120		300 – 800	
<b>AC or DC</b>	DC							
<b>Air flow</b> m <sup>3</sup> /h	340							
<b>Electrical consumption</b> W	120							
<b>Weight</b> kg	4.1			4.2		3.5	4.1	
<b>Ventilation speed levels</b>	3							
<b>Dimensions l x w x h</b> mm	216 x 368 x 137							
<b>Compatible refrigerant</b>	R134a / R1234yf							
<b>Blower voltage</b> V DC	12	24	12	24	12	24	12	24
<b>Part number</b>	830012239001	830012239101	830012239005	830012239105	830012239000	830012239100	830012239002	830012239102

Antifreeze thermostat included.



### Super K EHVAC

<b>Model</b>	ED4							
<b>Cooling performance</b> kW	2							
<b>Heating performance</b> kW	2		4					
<b>PTC voltage</b> V	24	48 – 59			60 – 120		300 – 800	
<b>AC or DC</b>	DC							
<b>Air flow</b> m <sup>3</sup> /h	340							
<b>Electrical consumption</b> W	120							
<b>Weight</b> kg	4.2							
<b>Ventilation speed levels</b>	3							
<b>Dimensions l x w x h</b> mm	268 x 368 x 137							
<b>Compatible refrigerant</b>	R134a / R1234yf							
<b>Blower voltage</b> V DC	12	24	12	24	12	24	12	24
<b>Part number</b>	830012239011	830012239111	830012239015	830012239115	830012239010	830012239110	830012239012	830012239112

Antifreeze thermostat included.



### Kool 2 EHVAC

Model	E		ED6					
Cooling performance kW	5.7							
Heating performance kW	2			4				
PTC voltage V	24		48 – 59		60 – 120	60 – 120	300 – 800	230
AC or DC	DC							AC
Air flow m <sup>3</sup> /h	520							
Electrical consumption W	180							
Weight kg	5.2	5.4	4.8	5	4.8	5	5.5	5.6
Ventilation speed levels	3							
Dimensions l x w x h mm	261 x 384 x 158		306 x 384 x 158					
Compatible refrigerant	R134a / R1234yf							
Blower voltage V DC	24		12	24	12	24	12	24
Part number	830012212504	830012212503	830012212519	830012212417	830012212507	830012212407	830012212406	830012212500

Antifreeze thermostat not included.



### Falkon EHVAC

Model	E						Multiflaks
Cooling performance kW	7.7						
Heating performance kW	3					6	
PTC voltage V	48 – 59	60 – 120	48 – 59	60 – 120	300 – 800		
AC or DC	DC						
Air flow m <sup>3</sup> /h	725						
Electrical consumption W	360						
Weight kg	6	6.6	6	6.6	7.7	8	
Ventilation speed levels	3						
Dimensions l x w x h mm	297 x 432 x 167						367 x 432 x 167
Compatible refrigerant	R134a / R1234yf						
Blower voltage V DC	12			24			12
Part number	830012219325	830012219175	830012219323	830012219165	830012219181	830012219177	

Antifreeze thermostat included.

# EVAPORATORS

## EHVAC UNITS – VERTICAL



### VK3 EHVAC

<b>Model</b>		FAI
<b>Cooling performance</b>	kW	2.5
<b>Heating performance</b>	kW	1.5
<b>PTC voltage</b>	V	48
<b>AC or DC</b>		DC
<b>Air flow</b>	m <sup>3</sup> /h	170
<b>Electrical consumption</b>	W	125
<b>Weight</b>	kg	6.7
<b>Ventilation speed levels</b>		3
<b>Dimensions l x w x h</b>	mm	175 x 173 x 555
<b>Compatible refrigerant</b>		R134a / R1234yf
<b>Blower voltage</b>	V DC	12
<b>Part number</b>		830012224002

Antifreeze thermostat included.



### MKO EHVAC

Model	E			ED4				ED4*							
<b>Cooling performance</b>	kW										4.3				
<b>Heating performance</b>	kW										2	1.8	2		
<b>PTC voltage</b>	V	24	48 - 59	60 - 120	48 - 59	48 - 59	60 - 120	60 - 120	48 - 59	60 - 120					
<b>AC or DC</b>											DC				
<b>Air flow</b>	m <sup>3</sup> /h										450				
<b>Electrical consumption</b>	W										213	270	213	270	213
<b>Weight</b>	kg										4.9	4.9	5	4.9	5.6
<b>Ventilation speed levels</b>											3				
<b>Dimensions l x w x h</b>	mm										160 x 324 x 378	160 x 327 x 378	160 x 324 x 453	160 x 449 x 453	
<b>Compatible refrigerant</b>											R134a / R1234yf				
<b>Blower voltage</b>	V DC										12	24	12	24	12
<b>Part number</b>	830012219050	830012219318	830012219052	830012219320	830012219322	830012219056	830012219161	830012219321	830012219057						

Antifreeze thermostat not included.

\* With filter and recycling flap.

## VK9 EHVAC

<b>Model</b>	E lateral outlet							
<b>Cooling performance</b> kW	6.5							
<b>Heating performance</b> kW	4							
<b>PTC voltage</b> V	24	48 – 59			60 – 120		300 – 800	
<b>AC or DC</b>	DC							
<b>Air flow</b> m <sup>3</sup> /h	640							
<b>Electrical consumption</b> W	220							
<b>Weight</b> kg	7.4							
<b>Ventilation speed levels</b>	3							
<b>Dimensions l x w x h</b> mm	174 x 476 x 360							
<b>Compatible refrigerant</b>	R134a / R1234yf							
<b>Blower voltage</b> V DC	12	24	12	24	12	24	12	24
<b>Part number</b>	830012225200	830012225300	830012225201	830012225301	830012225202	830012225302	830012225203	830012225303

Antifreeze thermostat included.

# ROOFTOP UNITS

## Rooftop units specification

CPE	With compressor and charged with refrigerant
CPF	With compressor and not charged with refrigerant

## VAC UNITS



### Klimatop VAC

Model	Klimatop VAC		Klimatop VAC rear outlet	
Cooling performance kW			5	
Air flow m <sup>3</sup> /h			560	
Electrical consumption W			150	
Weight kg	7.8		15	7
Ventilation speed levels			3	
Dimensions l x w x h mm			448 x 580 x 125	
Compatible refrigerant			R134a/R1234yf	
Blower voltage V	12	24	12	24
Associated diffuser	830034007365 / 830034007366	830034007365 / 830034007367	830034007365 / 830034007366	830034007365 / 830034007367
Part number	830012216000	830012216100	830012216003	830012216103

Evaporator only.



### RK4 VAC

Cooling performance kW			3.5	
Air flow m <sup>3</sup> /h			440	
Electrical consumption W			210	
Weight kg	30		21.5	
Ventilation speed levels			3	
Dimensions l x w x h mm			720 x 475 x 259	
Compatible refrigerant			R134a	
Blower voltage V	12		24	
Associated diffuser	830034003121		830034003122	
Part number	830012250500		830012250600	

Evaporator / condenser assembly.  
Compressor not included.

Air diffusion, control unit, pressure switch, receiver dryer and antifreeze thermostat included.

## VAC UNITS



### RK4 VAC CPE

Model	Manual temperature control							
Cooling performance kW	2.2	3.5						
Air flow m <sup>3</sup> /h	440							
Electrical consumption W	210	200	210	200	210	200	210	
Weight kg	24.5	27	27.5	28.2	28.5	28.2	26.6	
Ventilation speed levels	3							
Dimensions l x w x h mm	720 x 475 x 259							
Compatible refrigerant	R134a / R1234yf							
Blower voltage V	12	24	12	24	12	24	12	
Compressor voltage V	12	24	35 – 59	35 – 59	60 – 92	60 – 92	76 – 118	
Controller voltage V	12	24	12	24	12	24	12	
Maximum compressor power consumption W	740	1,320						1,120
Associated diffuser	830034003121	830034003122	830034003121	830034003122	830034003121	830034003122	830034003121	
Part number	830012270003	830012270103	830012270306	830012270208	830012270212	830012270209	830012270222	

Evaporator, condenser and electrical compressor assembly.  
Full A/C loop.  
Air diffusion, control unit, pressure switch, receiver dryer and antifreeze thermostat included.



### RK4 VAC CPF

Model	Manual temperature control							
Cooling performance kW	2.2	3.5						
Air flow m <sup>3</sup> /h	440							
Electrical consumption W	210	200	210	200	210	200	210	
Weight kg	28.2	25	28.5	28.5	28	26.6	27.8	
Ventilation speed levels	3							
Dimensions l x w x h mm	720 x 475 x 259							
Compatible refrigerant	R134a / R1234yf							
Blower voltage V	12	24	12	24	12	24	12	
Compressor voltage V	12	24	35 – 59	60 – 92	76 – 118			
Controller voltage V	12	24	12	24	12	24	12	
Maximum compressor power consumption W	740	1,360	1,320	1,320	1,320	1,320	1,120	
Associated diffuser	830034003121	830034003122	830034003121	830034003122	830034003121	830034003122	830034003121	
Part number	830012270000	830012270100	830012270303	830012270204	830012270210	830012270206	830012270202	

Evaporator, condenser and electrical compressor assembly.  
Full A/C loop.  
Air diffusion, control unit, pressure switch, receiver dryer and antifreeze thermostat included.

# ROOFTOP UNITS

## VAC UNITS



### RK9 VAC

Model	Manual temperature control Fluid output inward	
Cooling performance kW	7	
Air flow m <sup>3</sup> /h	610	
Electrical consumption W	325	
Weight kg	24	
Ventilation speed levels	3	
Dimensions l x w x h mm	932 x 580 x 192	
Compatible refrigerant	R134a / R1234yf	
Blower voltage V	12	24
Associated diffuser	830034017780	830034017780
Part number	830012281010	830012281110

Evaporator / condenser assembly.

Compressor not included.

Pressure switch, receiver dryer and antifreeze thermostat included.

### RK9 VAC CPF

Model	Manual temperature control	
Cooling performance kW	5.5	
Air flow m <sup>3</sup> /h	610	
Electrical consumption W	325	
Weight kg	35	
Ventilation speed levels	3	
Dimensions l x w x h mm	1,101 x 580 x 250	
Compatible refrigerant	R134a	
Blower voltage V	24	
Compressor voltage V	24	
Controller voltage V	24	
Maximum compressor power consumption W	1,360	
Associated diffuser	830034017780	
Part number	830012280102	

Evaporator, condenser and electrical compressor assembly.

Full A/C loop.

Pressure switch, receiver dryer and antifreeze thermostat included.

Driven by a PCK3 unit or equivalent.

R134a prefilled.





## RK12 VAC

<b>Model</b>	Manual temperature control Fluid output inward	
<b>Cooling performance</b> kW	11.5	
<b>Air flow</b> m <sup>3</sup> /h	950	
<b>Electrical consumption</b> W	650	
<b>Weight</b> kg	50	
<b>Ventilation speed levels</b>	3	
<b>Dimensions l x w x h</b> mm	1,090 x 940 x 179	
<b>Compatible refrigerant</b>	R134a / R1234yf	
<b>Blower voltage</b> V	12	24
<b>Condenser dissipated power</b> kW	14	
<b>Associated diffuser</b>	8300340170110 / 830034003414	8300340170110 / 830034003414
<b>Part number</b>	830012250001	830012250201

Evaporator / condenser assembly.

Compressor not included.

Pressure switch, receiver dryer and antifreeze thermostat included.

# ROOFTOP UNITS

## HVAC UNITS



### Klimatop HVAC

Model	Klimatop HVAC		Klimatop HVAC rear outlet					
Cooling performance	kW		5					
Heating performance	kW		6					
Air flow	m <sup>3</sup> /h		560					
Electrical consumption	W		150					
Weight	kg	7.5	11.5	8				
Water connection	Ø mm		16					
Ventilation speed levels			3					
Dimensions l x w x h	mm		448 x 580 x 125					
Compatible refrigerant	R134a / R1234yf							
Blower voltage	V	12	24	12	24			
Associated diffuser	830034007365 / 830034007366		830034007365 / 830034007367		830034007365 / 830034007366		830034007365 / 830034007367	
Part number	830012216001		830012216101		830012216002		830012216102	

Evaporator only.  
Antifreeze thermostat included.



### RK9 HVAC

Model	Manual temperature control Fluid output inward		Manual temperature control Fluid output outward		Automatic temperature control Fluid output inward		Automatic temperature control Fluid output outward			
Cooling performance	kW		7		8.2					
Heating performance	kW		610		325					
Air flow	m <sup>3</sup> /h		24		27.5		24			
Electrical consumption	W		16		3		0-100			
Weight	kg		932 x 580 x 192		R134a / R1234yf					
Water connection	Ø mm		12		24		12		24	
Ventilation speed levels			830034017781		830034017781		830034017774		830034017774	
Dimensions l x w x h	mm		830012281000		830012281100		830012281004		830012281005	
Compatible refrigerant			830012281001		830012281101		830012281004		830012281005	
Blower voltage	V	12	24	12	24	12	24	12	24	
Associated diffuser	830034017781		830034017781		830034017774		830034017774		830034017774	
Part number	830012281000		830012281100		830012281004		830012281005		830012281105	

Evaporator / condenser assembly.  
Compressor not included.  
Pressure switch, receiver dryer and antifreeze thermostat included.


**RK12 HVAC**

Model	Manual temperature control Fluid output inward	
Cooling performance kW	11.5	
Heating performance kW	15	
Air flow m <sup>3</sup> /h	950	
Electrical consumption W	650	
Weight kg	50	
Water connection Ø mm	16	
Ventilation speed levels	3	
Dimensions l x w x h mm	1,090 x 940 x 179	
Compatible refrigerant	R134a / R1234yf	
Blower voltage V	12	24
Condenser dissipated power kW	14	
Associated diffuser	830034017011 / 830034003414	830034017011 / 830034003414
Part number	830012250003	830012250203

Evaporator / condenser assembly.

Compressor not included.

Pressure switch, receiver dryer and antifreeze thermostat included.

# ROOFTOP UNITS

## EHVAC UNITS



### RK9 EHVAC CPF

Model	Manual temperature control		
Cooling performance kW	5.5		6
Heating performance kW	2		6
Air flow m <sup>3</sup> /h	530		
Electrical consumption W	325		
Weight kg	35	7	36.5
Ventilation speed levels	3		
Dimensions l x w x h mm	1,101 x 580 x 250		
Compatible refrigerant	R134a		
Blower voltage V	24		12
Compressor voltage V	24	300 – 450	400 – 750
PTC voltage V	24	300 – 450	400 – 750
Compressor input signal control	NA	CAN	CAN
Maximum compressor power consumption W	1,360		2,209
Associated diffuser	830034017782	830034017782	830034017782
Part number	830012280146	830012280052	830012280153

Evaporator, condenser and electrical compressor assembly. Full A/C loop.  
 Air diffusion, control unit, pressure switch, receiver dryer and antifreeze thermostat included.  
 Driven by a PCK3 unit or equivalent.  
 R134a prefilled.

# CONDENSERS

## CONDENSER PLATES



Condenser TA

Dimensions l x w x h	mm	355 x 620 x 46
Weight	kg	3.7
Compatible refrigerant		R134a / R1234yf
Part number		830034083000



Condenser PF

Dimensions l x w x h	mm	348 x 425 x 22	400 x 250 x 18	348 x 539 x 22	303 x 425 x 22	348 x 425 x 22	303 x 540 x 26	303 x 550 x 22	446 x 669 x 22	217 x 564 x 26
Weight	kg	1.5	1.5	2	1.4	2.5	2.2	1.8	3.1	1.6
Compatible refrigerant		R134a / R1234yf								
Part number		830034083104	830034083008	830034083016	830034083103	830034083904	830034083107	830034083101	830034083102	830034083077



Condenser PF with integrated drier filter

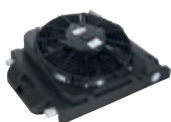
Dimensions l x w x h	mm	306 x 259 x 28	450 x 377 x 26	217 x 539 x 26
Weight	kg	1.6	2.7	1.8
Compatible refrigerant		R134a / R1234yf		
Part number		830034083106	830034083105	830034083076

# CONDENSERS

## VENTILATED CONDENSERS

### Ventilated condenser specification

xS	Single fan
xD	Double fan
xT	Triple fan



### Kondor

Model	5S		6S		7.5S	7.5D		
Condenser dissipated power	V		5		6	7.5		
Electrical consumption	W		90		120	230		
Weight	kg	3.8	3.7	4.3	4.3	4.6	5.2	
Dimensions l x w x h	mm		320 x 430 x 149		320 x 547 x 119	362 x 545 x 121	322 x 677 x 112	
Compatible refrigerant	R134a / R1234yf							
Blower voltage	V	12	24	12	24	12	12	24
Receiver dryer	Yes		No					
Pressure switch	No							
Part number	830012300041	830012300141	830012300027	830012300127	830012300026	830012300025	830012300125	

## Kondor with hermetically sealed-electrical connector



<b>Model</b>	5.5S		6T		6T		7.5S	7.5D	
<b>Condenser dissipated power</b>	V	5.5		6		7.5			
<b>Electrical consumption</b>	W	110		185		110	230		
<b>Weight</b>	kg	5.3	3	7.3		4.6	5.3		
<b>Dimensions l x w x h</b>	mm	319 x 547 x 109		230 x 700 x 125		362 x 545 x 121	322 x 677 x 112		
<b>Compatible refrigerant</b>	R134a / R1234yf								
<b>Blower voltage</b>	V	12	24	12	24	12	24	24	12
<b>Receiver dryer</b>	No		No		Yes		No		
<b>Pressure switch</b>	No		No		No		No		
<b>Part number</b>	830012300024	830012300124	830012300053	830012300153	830012300052	830012300152	830012300126	830012300028	

## Kondor with hermetically sealed-electrical connector



<b>Model</b>	10S		14D		15D		
<b>Condenser dissipated power</b>	V	10		14		15	
<b>Electrical consumption</b>	W	225		230			
<b>Weight</b>	kg	8	5.4	8.8	8.7	12.2	
<b>Dimensions l x w x h</b>	mm	322 x 677 x 112		458 x 793 x 120		473 x 909 x 140	
<b>Compatible refrigerant</b>	R134a / R1234yf						
<b>Blower voltage</b>	V	12	24	24		12	24
<b>Receiver dryer</b>	Yes		No		Yes		
<b>Pressure switch</b>	No		No		Yes*		
<b>Part number</b>	830012300042	830012300128	830012300023	830012300123	830012300050	830012300150	

\* Trinary pressure switch with three steps: low, medium and high pressure sensor.



# CONDENSERS

## CONDENSER UNITS



### Power K Horizontal

Cooling performance	kW	2.2	4				3.2
Electrical consumption	W	90					
Weight	kg	20.8	19.5	17	19.6	20	28
Ventilation speed levels		1					
Dimensions l x w x h	mm	200 x 458 x 598					
Compatible refrigerant		R134a					
Blower voltage	V	12	24	12	24	220	
Compressor voltage AC or DC		DC					AC
Compressor voltage	V	12	24	35 – 59	60 – 92	115 – 130	220
Controller voltage	V	12/24					
Input signal control		ON/OFF					
Maximum compressor power consumption	W	820	1,500	1,320		1,600	1,000
Part number		830012600002	830012600102	830012600208	830012219325	830012219325	830012219325

Pressure switch included.  
Receiver dryer included.



### Power K Vertical

Cooling performance	kW	2.2	4				3.2
Electrical consumption	W	90					85
Weight	kg	20.1	20.8	17.2	20	22	27.5
Ventilation speed levels		1					
Dimensions l x w x h	mm	200 x 458 x 598					
Compatible refrigerant		R134a					
Blower voltage	V	12	24	12	24	12	220
Compressor voltage AC or DC		DC					AC
Compressor voltage	V	12	24	35 – 59	35 – 59	60 – 92	220
Controller voltage	V	12/24					
Input signal control		ON/OFF					
Maximum compressor power consumption	W	820	1,500	1,320			1,000
Part number		830012600001	830012600101	830012600210	830012600200	830012600211	830012610001

Pressure switch included.  
Receiver dryer included.

### Power K Reverse

<b>Cooling performance</b>	kW	2.2	4	3.2	
<b>Electrical consumption</b>	W	90			
<b>Weight</b>	kg	17.2	17.1	17.2	27.6
<b>Ventilation speed levels</b>		1			
<b>Dimensions l x w x h</b>	mm	204 x 566 x 445		200 x 458 x 598	
<b>Compatible refrigerant</b>		R134a / R1234yf		R134a	
<b>Blower voltage</b>	V	12	24	12	
<b>Compressor voltage AC or DC</b>		DC			
<b>Compressor voltage</b>	V	12	24	35 – 59	220
<b>Controller voltage</b>	V	12 / 24			
<b>Input signal control</b>		ON / OFF			
<b>Maximum compressor power consumption</b>	W	820	1,500	1,200	1,000
<b>Part number</b>		830012600207	830012600209	830012600206	830012610002

Pressure switch included.  
Receiver dryer included.

# COMPRESSORS

## BELT DRIVEN APPLICATIONS

### K Compressors

<b>Model</b>		K0060	K0090
<b>Weight</b> kg		4.3	4.8
<b>Dimensions l x w x h</b> mm		104 x 150 x 146	124 x 164 x 146
<b>Compatible refrigerant</b>		R134a	
<b>Controller voltage</b> V		12	
<b>Pulley diameter Ø and groove G</b>		1 G-118-SPZ	
<b>Type of connection</b>		O-ring	Clamp
<b>Orientation of connection</b> H/V		V	
<b>Rotation</b>		Clockwise	
<b>Displacement</b> CC		63	96
<b>Associated flange kit</b>		830070001099	830070001200
<b>Part number</b>		830070008311	830070008022



### S7H15

<b>Weight</b> kg		7.2	8	7.7	7.5	7.2	8
<b>Dimensions l x w x h</b> mm		124 x 211 x 132					
<b>Compatible refrigerant</b>		R134a					
<b>Controller voltage</b> V		12		24		12	24
<b>Pulley diameter Ø and groove G</b>		2 G-132-SPA					
<b>Type of connection</b>		O-ring			Rotolock		
<b>Orientation of connection</b> H/V		H		V		H	V
<b>Rotation</b>		Clockwise					
<b>Displacement</b> CC		155					
<b>Part number</b>		830070008010	830070008003	830070008103	830070008006	830070008001	830070008100

## TM16

Weight	kg	8.1	
Dimensions l x w x h	mm	246 x 124 x 124	223 x 124 x 126
Compatible refrigerant		R134a	
Controller voltage	V	12	
Pulley diameter Ø and groove G		2 G-123-POLY V8	
Type of connection		O-ring	
Orientation of connection	H/V	V	H
Rotation		Clockwise	
Displacement	CC	163	
Part number		830070008126	830070008131



## SD7B10

Model		Trapezoid with 2 grooves	
Weight	kg	5	
Dimensions l x w x h	mm	115 x 175.2 x 169	
Compatible refrigerant		R134a	
Controller voltage	V	12	
Pulley diameter Ø and groove G		2 G-115-SPA	
Type of connection		Clamp	
Orientation of connection	H/V	H	
Rotation		Clockwise	
Displacement	CC	99.8	
Associated flange kit		830070001104	
Part number		830070008200	

# COMPRESSORS

## HYDRAULIC DRIVEN APPLICATIONS



### 7H15

Weight	kg	12
Dimensions l x w x h	mm	162 x 388 x 153
Compatible refrigerant		R134a
Flow	l/min	60 – 65
Pressure	bar	12
Part number		830070012201

## ELECTRICALLY DRIVEN APPLICATIONS



### SH

Cooling performance	kW	2.2		2.5	
Weight	kg	5.6	5.6	5.5	5.6
Dimensions l x w x h	mm	135 x 207 x 155	154 x 205 x 155	135 x 205 x 155	135 x 207 x 155
Compatible refrigerant		R134a / R1234yf			
Compressor voltage	V	12	40 – 95	35 – 65	76 – 118
Input signal control		3 steps			
Maximum compressor power consumption	W	1,200	1,100	1,200	
Displacement	CC	18			
Associated flange kit		830070001250	830070001250	830070001250	830070001250
Part number		830070008320	830070008322	830070008359	830070008329

DC current.  
Rotation clockwise.

## SH

<b>Cooling performance</b>	kW	4.0	4.6		6.32
<b>Weight</b>	kg	6	5.9	6.3	5.6
<b>Dimensions l x w x h</b>	mm	135 x 207 x 155		135 x 208 x 155	123 x 203 x 155
<b>Compatible refrigerant</b>		R134a / R1234yf			
<b>Compressor voltage</b>	V	24	35 – 65	58 – 32	115 – 130
<b>Input signal control</b>		3 steps			
<b>Maximum compressor power consumption</b>	W	2,200		2,100	2,330
<b>Displacement</b>	CC	24	27	34	28
<b>Associated flange kit</b>		830070001250	830070001250	830070001250	830070001250
<b>Part number</b>		830070008321	830070008337	830070008341	830070008342

DC current.  
Rotation clockwise.

## SH

<b>Cooling performance</b>	kW	4.6	5.3	5.8
<b>Weight</b>	kg	6.3	5.7	6.2
<b>Dimensions l x w x h</b>	mm	135 x 207 x 155	123 x 204 x 155	127 x 282 x 172
<b>Compatible refrigerant</b>		R134a / R1234yf		
<b>Compressor voltage</b>	V	220 – 425	78 – 120	400 – 750
<b>Controller voltage</b>	V	12		9 – 36
<b>Input signal control</b>		PWM		CAN
<b>Maximum compressor power consumption</b>	W	2,200		5,800
<b>Orientation of connection</b>	H/V	H	NA	
<b>Displacement</b>	CC	18		
<b>Associated flange kit</b>		830070001250	830070001250	830070001367
<b>Part number</b>		830070008364	830070008343	830070008339

DC current.  
Rotation clockwise.

# PRESSURIZATION

## PRESSURIZATION SYSTEM



### K Protec

<b>Air flow</b>	m <sup>3</sup> /h	30-90			52		
<b>Electrical consumption</b>	W	50					
<b>Weight</b>	kg	6.1	5.9	6.1	7	7.7	7.6
<b>Dimensions l x w x h</b>	mm	336 x 529 x 109					
<b>Blower voltage</b>	V	12	24	12		24	
<b>Filter type category</b>		2			4		
<b>Pressure regulation</b>		Mechanical	Mechanical	Mechanical	Electronic	Mechanical	Electronic
<b>Part number</b>		830012170001	830012170101	830012170002	830012170000	830012170102	830012170100

Evaporator: vertical or horizontal H/V  
 Standard: EN 15695  
 Controller: Kanbox

## AIR FILTERS



<b>Model</b>		Class 2 air filter	Class 4 air filter
<b>Weight</b>	g	1,500	3,060
<b>Dimensions l x w x h</b>	mm	500 x 100 x 110	
<b>Part number</b>		8300340702400	8300340702380

## OVERPRESSURE FLAPS



Model	Uncalibrated overpressure flap	Calibrated overpressure flap
Dimensions l x w x h mm	130 x 110 x 30	137 x 173 x 31
Part number	830034008058	830034008068

## LEAK GENERATOR



Model	Adjustable shutter – leak generator
Cutout size mm	55
Fixing type	Screw
Connector (PAP duct)	Yes
Associated parts	Kaledonia range
Dimensions l x w x h mm	61 x 77 x 23
Part number	830034008069



## 2. BLOWER HEATERS

### Model

HV	Blower and water radiator
EHV	Blower and PTC resistor

### Outlet panel

E	Without outlet panel
G	Grille
ED1	1-outlet panel
ED2	2-outlet panel
ED4	4-outlet panel
KC	Adjustable and closable outlets, rotating with the louver core
FAI	Control unit and air outlets

# WATER BLOWER HEATERS



## Silencio 1 HV

Model	E		FAI		FAI 12V gray
Heating performance kW	1.7				
Air flow m <sup>3</sup> /h	110				
Electrical consumption W	7				
Weight kg	1				
Water connection Ø mm	16				
Ventilation speed levels	2				
Dimensions l x w x h mm	141 x 170 x 131		141 x 210 x 144		
Blower voltage V	12	24	12	24	12
Part number	830012014057	830012014157	830012014081	830012014181	830012014082

Brushless motor included.

# WATER BLOWER HEATERS



## Alizé 2 HV

Model	E		ED1	ED2		ED4	
Heating performance kW				3.4			
Air flow m <sup>3</sup> /h				220			
Electrical consumption W				70			
Weight kg	1.4			1.8		1.7	1.5
Water connection Ø mm				16			
Ventilation speed levels				3			
Dimensions l x w x h mm	189 x 175 x 132		215 x 175 x 132	214 x 175 x 132		214 x 175 x 132	
Blower voltage V	12	24	12	12	24	12	24
Part number	830012014300	830012014400	830012014308	830012014307	830012014400	830012014302	830012014407



## Alizé 2 VI HV

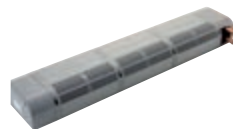
Model	FAI	
Heating performance kW	3.4	
Air flow m <sup>3</sup> /h	220	
Electrical consumption W	45	
Weight kg	3	3
Water connection Ø mm	16	
Ventilation speed levels	3	
Dimensions l x w x h mm	146 x 196 x 328	
Blower voltage V	12	24
Part number	830012014301	830012014401



### Kosto 2 HV

<b>Model</b>	G	
<b>Heating performance</b> kW	3.8	
<b>Air flow</b> m <sup>3</sup> /h	220	
<b>Electrical consumption</b> W	20	
<b>Weight</b> kg	2.2	
<b>Water connection</b> Ø mm	16	
<b>Ventilation speed levels</b>	2	
<b>Dimensions l x w x h</b> mm	360 x 125 x 125	
<b>Blower voltage</b> V	12	
<b>Part number</b>	830012023001	

Brushless motor included.



### Baikal 3 HV

<b>Model</b>	G	
<b>Heating performance</b> kW	4	
<b>Air flow</b> m <sup>3</sup> /h	200	
<b>Electrical consumption</b> W	15	
<b>Weight</b> kg	2.5	
<b>Water connection</b> Ø mm	16	
<b>Ventilation speed level</b>	1	
<b>Dimensions l x w x h</b> mm	757 x 80 x 156	
<b>Blower voltage</b> V	12	24
<b>Part number</b>	830012024023	830012024123

Brushless motor included.

# WATER BLOWER HEATERS



Kuba HV

Model	G		G, gray		FAI*		FAI		FAI, gray	
Heating performance	kW		4.9		3.3				4.9	
Air flow	m <sup>3</sup> /h		270		150				270	
Electrical consumption	W		110		7				110	
Weight	kg		1.7		1.5		2.1		1.7	
Water connection	Ø mm		16		16				16	
Ventilation speed levels			3		2				3	
Dimensions l x w x h	mm		238 x 262 x 195		148 x 262 x 195				238 x 262 x 195	
Blower voltage	V		12	12	24	12	24	12	12	24
Part number	830012018053	830012018054	830012018154	830012018085	830012018185	830012018050	830012018051	830012018151		

\* Brushless motor included.



Compact EV01 HV

Model	E		ED1		ED4	
Heating performance	kW		4.3			
Air flow	m <sup>3</sup> /h		230			
Electrical consumption	W		70			
Weight	kg		1.5	1.7	1.5	1.7
Water connection	Ø mm		16			
Ventilation speed levels			3			
Dimensions l x w x h	mm		189 x 255 x 114		254 x 255 x 114	
Blower voltage	V		12	24	12	24
Part number	830012032000	830012032100	830012032015	830012032115	830012032001	830012032101



### Compact EV01 HV

Model	G		KC		FAI	
Heating performance kW			4.3			
Air flow m <sup>3</sup> /h			230			
Electrical consumption W			70			
Weight kg	1.6	1.7	1.5	1.7	2	2.2
Water connection Ø mm			16			
Ventilation speed levels			3			
Dimensions l x w x h mm	190 x 255 x 114		205 x 255 x 114		299 x 280 x 114	
Blower voltage V	12	24	12	24	12	24
Part number	830012032002	830012032102	830012032013	830012032113	830012032003	830012032103



### AK HV

Model	E			ED4		
Heating performance kW	4.9	6		4.9	6	
Air flow m <sup>3</sup> /h	270	350		270	350	
Electrical consumption W	110	205		110	205	
Weight kg	1.7	1.5	2	2.5	1	1.8
Water connection Ø mm			16			
Ventilation speed levels			3			
Dimensions l x w x h mm	223 x 217 x 175	235 x 217 x 175	235 x 217 x 175	255 x 250 x 177	268 x 250 x 177	
Blower voltage V	12	12	24	12	24	12
Part number	830012018300	830012018005	830012018105	830012018302	830012018107	830012018007

# WATER BLOWER HEATERS



## Compact EV02 HV

Model	E		ED1	ED4		ED4*
Heating performance kW			5.2			
Air flow m <sup>3</sup> /h			350			
Electrical consumption W			100			
Weight kg	2.2		2.2	2.5	2.8	
Water connection Ø mm			16			
Ventilation speed levels			3			
Dimensions l x w x h mm	196 x 273 x 114		260 x 273 x 114	241 x 273 x 114		241 x 273 x 114
Blower voltage V	12	24	12	12	24	12
Part number	830012027001	830012027101	830012027015	830012027002	830012027102	830012027009

\* Equipped with 3-flap outlet.



## Compact EV02 HV

Model	G		KC		FAI	
Heating performance kW			5.2			
Air flow m <sup>3</sup> /h			350			
Electrical consumption W			100			
Weight kg	2.3		2.6		3.2	
Water connection Ø mm			16			
Ventilation speed levels			3			
Dimensions l x w x h mm	197 x 273 x 114		211 x 273 x 114		312 x 332 x 114	
Blower voltage V	12	24	12	24	12	
Part number	830012027006	830012027106	830012027013	830012027113	830012027010	



### Silencio 2 HV

<b>Model</b>	G			
<b>Heating performance</b> kW	5.5			
<b>Air flow</b> m <sup>3</sup> /h	250			
<b>Electrical consumption</b> W	16			
<b>Weight</b> kg	1.6		1.1	2
<b>Water connection</b> Ø mm	16		22	
<b>Ventilation speed levels</b>	2			
<b>Dimensions l x w x h</b> mm	129 x 321 x 152			
<b>Blower voltage</b> V	12	24	12	12
<b>Part number</b>	830012014030	830012014130	830012014038	830012014138

Brushless motor included.



### Super K HV

<b>Model</b>	E		ED4		Box ED4	
<b>Heating performance</b> kW	7.6				7.5	
<b>Air flow</b> m <sup>3</sup> /h			500			
<b>Electrical consumption</b> W			100			
<b>Weight</b> kg	3.1				4.2	
<b>Water connection</b> Ø mm			16			
<b>Ventilation speed levels</b>			3			
<b>Dimensions l x w x h</b> mm	216 x 368 x 137		268 x 368 x 137		216 x 368 x 137	
<b>Blower voltage</b> V	12	24	12	24	12	24
<b>Part number</b>	830012026006	830012026102	830012026001	830012026101	830012026009	830012026109



# WATER BLOWER HEATERS



## Super K HV

Model	G		KC	
Heating performance kW			7.6	
Air flow m <sup>3</sup> /h			500	
Electrical consumption W			100	
Weight kg			2.9	
Water connection Ø mm			16	
Ventilation speed levels			3	
Dimensions l x w x h mm	220 x 368 x 137		250 x 368 x 137	
Blower voltage V	12	24	12	24
Part number	830012026000	830012026100	830012026008	830012026108



## KAB HV

Model	KAB HV 7.6		KAB HV 10		KAB HV 14.8	
Heating performance kW	7.6		10		14.8	
Air flow m <sup>3</sup> /h	170		265		370	
Electrical consumption W	100		180		360	
Weight kg	5.7	5	5.5	7	6	
Water connection Ø mm	16		16		16	
Ventilation speed levels			3			
Dimensions l x w x h mm	380 x 589 x 130		380 x 589 x 161		380 x 589 x 169	
Blower voltage V	12	24	12	24	12	24
Part number	830012026011	830012026111	830012012204	830012012304	830012029012	830012029112

With integrated air diffusion and control unit.



### Kinox HV

<b>Model</b>	ED4		
<b>Heating performance</b> kW	10		
<b>Air flow</b> m <sup>3</sup> /h	520		
<b>Electrical consumption</b> W	180		
<b>Weight</b> kg	5.9		6
<b>Water connection</b> Ø mm	16		
<b>Ventilation speed levels</b>	3		
<b>Dimensions l x w x h</b> mm	286 x 440 x 130		
<b>Blower voltage</b> V	12		24
<b>Part number</b>	830012016010		830012016110



### Kool2 HV

Model	E		ED6		KC		FAI
<b>Heating performance</b> kW	10						
<b>Air flow</b> m <sup>3</sup> /h	520						
<b>Electrical consumption</b> W	180						
<b>Weight</b> kg	3.9	4	4.3		4.4		4.3
<b>Water connection</b> Ø mm	16						
<b>Ventilation speed levels</b>	3						
<b>Dimensions l x w x h</b> mm	261 x 384 x 158		306 x 384 x 158		293 x 384 x 158		309 x 476 x 158
<b>Blower voltage</b> V	12	24	12	24	12	24	24
<b>Part number</b>	830012012200	830012012300	830012012201	830012012300	830012012203	830012012303	830012012302

# WATER BLOWER HEATERS



## Falkon HV

Model	E		ED6		KC	
Heating performance kW			14.8			
Air flow m <sup>3</sup> /h			725			
Electrical consumption W			360			
Weight kg	5.4		5.5		5	5.6
Water connection Ø mm			16			
Ventilation speed levels			3			
Dimensions l x w x h mm	296 x 432 x 167		341 x 432 x 167		328 x 432 x 167	
Blower voltage V	12	24	12	24	12	24
Part number	830012029000	830012029100	830012029001	830012029101	830012029007	830012029107



## Falkon Box HV

Model	E		ED6 Maritime*	
Heating performance kW			14.8	
Air flow m <sup>3</sup> /h			725	
Electrical consumption W			360	
Weight kg	7		7.2	
Water connection Ø mm			16	
Ventilation speed levels			3	
Dimensions l x w x h mm	495 x 510 x 173		495 x 510 x 183	
Blower voltage V	12		12	
Part number	830012031000		830012031001	

\* Sealed product.



# ELECTRIC BLOWER HEATERS



## Minikelec EHV

Model	FAI						
Heating performance kW	0.17	0.3	0.42	0.48	0.75	0.9	
Air flow m <sup>3</sup> /h	70						
Electrical consumption W	8						
Weight kg	1	1.1	1		0.9	1.5	
Ventilation speed level	1						
Dimensions l x w x h mm	80 x 219 x 122						
Blower voltage V DC	24	24	12	24	24	12	12
PTC voltage V	24	24	12	24	24	80	48
Part number	830012030323	830012030322	830012030330	830012030321	830012030320	830012030300	830012030310

Brushless motor included.



## Silencelek EHV

Model	FAI	
Heating performance kW	0.5	
Air flow m <sup>3</sup> /h	95	
Electrical consumption W	510	
Weight kg	1.2	
Ventilation speed levels	2	
Dimensions l x w x h mm	80 x 210 x 156	
Blower/PTC voltage V AC	230	
Part number	830012030400	

Brushless motor included.



### Kelec EV01 EHV

<b>Model</b>	E									
<b>Heating performance</b> kW	0.85									1.7
<b>Air flow</b> m <sup>3</sup> /h	230									
<b>Electrical consumption</b> W	50									
<b>Weight</b> kg	1.5					1.6				
<b>Ventilation speed levels</b>	3									
<b>Dimensions l x w x h</b> mm	189 x 255 x 114									237 x 255 x 114
<b>Blower voltage</b> V DC	24	12				24				48
<b>PTC voltage</b> V	80	24	80	48	48-59	60-120	48	24	48	
<b>Part number</b>	830012033610	830012033100	830012033300	830012033200	830012033315	830012033305	830012033500	830012033400	830012033700	

### Kelec EV01 EHV

<b>Model</b>	ED4										
<b>Heating performance</b> kW	0.6	0.85				1.7					
<b>Air flow</b> m <sup>3</sup> /h	230										
<b>Electrical consumption</b> W	50										
<b>Weight</b> kg	1.6	1.7	1.5	1.7	1.5	1.7				1.5	
<b>Ventilation speed levels</b>	3										
<b>Dimensions l x w x h</b> mm	237 x 255 x 114										190 x 255 x 114
<b>Blower voltage</b> V DC	24	12	12		12	12	12	24	24	24	
<b>PTC voltage</b> V	24	48	80	12	48	80	230	24	80	80	
<b>Part number</b>	830012030400	830012033211	830012033311	830012033101	830012033201	830012033301	830012033801	830012033401	830012033601	830012033602	



# ELECTRIC BLOWER HEATERS

## Kelec EV01 EHV

Model	G		
Heating performance kW	0.8	0.85	1.2
Air flow m <sup>3</sup> /h	230	230	230
Electrical consumption W	50	50	50
Weight kg	1.5	1.4	1.6
Ventilation speed levels	3	3	3
Dimensions l x w x h mm	190 x 255 x 114	190 x 255 x 114	190 x 255 x 114
Blower voltage V DC	24	12	24
PTC voltage V	24	80	24
Part number	830012033903	830012033302	830012033402



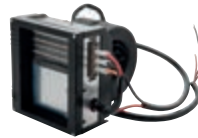
## Kelec EV02 EHV

Model	E					ED4		
Heating performance kW	1.7	1.8			0.85			
Air flow m <sup>3</sup> /h	350							
Electrical consumption W	100							
Weight kg	2.4	2.5	2.8		2.5	1.5		
Ventilation speed levels	3							
Dimensions l x w x h mm	196 x 273 x 114					244 x 273 x 114		
Blower voltage V DC	12	12	24	24	48	12	12	12
PTC voltage V	80	48	60 – 120	48 – 59	48	48	48 – 59	60 – 120
Part number	830012034600	830012034200	830012034500	830012034510	830012034800	830012034211	830012034321	830012034311



## Kelec EV02 EHV

<b>Model</b>	ED4									G
<b>Heating performance</b> kW	1.2			1.5			1.7			
<b>Air flow</b> m <sup>3</sup> /h	350									
<b>Electrical consumption</b> W	100									
<b>Weight</b> kg	2.5	2.6	2.4		2.5		2.4		2.5	
<b>Ventilation speed levels</b>	3									
<b>Dimensions l x w x h</b> mm	244 x 273 x 114			196 x 273 x 114		244 x 273 x 114			198 x 273 x 114	
<b>Blower voltage</b> V DC	12	12	12	24	12	24	12	24	24	
<b>PTC voltage</b> V	48	120	24	24	24	24	80	80	24	
<b>Part number</b>	830012034201	830012034401	830012034100	830012034400	830012034101	830012034404	830012034301	830012034201	830012034405	



## AK EHV

<b>Model</b>	E	
<b>Heating performance</b> kW	1.2	1.4
<b>Air flow</b> m <sup>3</sup> /h	235	
<b>Electrical consumption</b> W	70	
<b>Weight</b> kg	1.7	
<b>Ventilation speed levels</b>	3	
<b>Dimensions l x w x h</b> mm	220 x 175 x 175	
<b>Blower voltage</b> V DC	12	
<b>PTC voltage</b> V	24	48
<b>Part number</b>	830012030200	830012030201



# ELECTRIC BLOWER HEATERS



## Alizé 2 EHV

<b>Model</b>	E					
<b>Heating performance</b> kW	1.8					
<b>Air flow</b> m <sup>3</sup> /h	210					
<b>Electrical consumption</b> W	45					
<b>Weight</b> kg	1.4	1.5		3	1.5	
<b>Ventilation speed levels</b>	3					
<b>Dimensions l x w x h</b> mm	189 x 175 x 132					
<b>Blower voltage</b> V DC	12	24	24	12	24	12
<b>PTC voltage</b> V	48	48 – 59	60 – 120	80	80	96
<b>Part number</b>	830012036001	830012036125	830012036105	830012036003	830012036112	830012036005



## Alizé 2 EHV

<b>Model</b>	E		ED4		
<b>Heating performance</b> kW	1.8				
<b>Air flow</b> m <sup>3</sup> /h	210				
<b>Electrical consumption</b> W	45				
<b>Weight</b> kg	1.8	1.5	1.5	2	1.7
<b>Ventilation speed levels</b>	3				
<b>Dimensions l x w x h</b> mm	189 x 175 x 132		215 x 175 x 132		
<b>Blower voltage</b> V DC	12	24	12	12	12
<b>PTC voltage</b> V	300	120	48	80	96
<b>Part number</b>	830012036015	830012036107	830012036008	830012036108	830012036009



## Alizé 2 VI EHV

<b>Model</b>	FAI						
<b>Heating performance</b> kW	1.8						
<b>Air flow</b> m <sup>3</sup> /h	210						
<b>Electrical consumption</b> W	45						
<b>Weight</b> kg	2	3	2	3.1	2	3.1	
<b>Ventilation speed levels</b>	3						
<b>Dimensions l x w x h</b> mm	146 x 212 x 329						
<b>Blower voltage</b> V DC	12	12	24	12	24	12	24
<b>PTC voltage</b> V	48	80		96		120	
<b>Part number</b>	830012036000	830012036002	830012036102	830012036004	830012036104	830012036006	830012036106

# ELECTRIC BLOWER HEATERS

## Kool 2 EHV



Model	E			ED6		
Heating performance kW	4	2		4		
Air flow m <sup>3</sup> /h	520					
Electrical consumption W	180					
Weight kg	4.4	5	5.4	4.8	4.8	5
Ventilation speed levels	3					
Dimensions l x w x h mm	261 x 384 x 156			306 x 384 x 156		261 x 384 x 156
Blower voltage V DC	12	24	24	12	12	12
PTC voltage V	350 – 750	24	230	80	60 – 120	350 – 750
Part number	830012038005	830012038012	830012038001	830012036003	830012038014	830012038009



## Super K EHV

Model	E							
Heating performance kW	2		4					
Air flow m <sup>3</sup> /h	340							
Electrical consumption W	120							
Weight kg	3.6							
Ventilation speed levels	3							
Dimensions l x w x h mm	216 x 368 x 130							
Blower voltage V DC	12	24	12	24	12	24	12	24
PTC voltage V	24		48 – 59		60 – 120		300 – 800	
Part number	830012039001	830012039101	830012039005	830012039105	830012039000	830012039100	830012039002	830012039102



### Super K EHV

<b>Model</b>	ED4							
<b>Heating performance</b> kW	2				4			
<b>Air flow</b> m <sup>3</sup> /h	340							
<b>Electrical consumption</b> W	120							
<b>Weight</b> kg	3.7							
<b>Ventilation speed levels</b>	3							
<b>Dimensions l x w x h</b> mm	268 x 368 x 130							
<b>Blower voltage</b> V DC	12	24	12	24	12	24	12	24
<b>PTC voltage</b> V	24		48 – 59		60 – 120		300 – 800	
<b>Part number</b>	830012039011	830012039111	830012039015	830012039115	830012039010	830012039110	830012039012	830012039112



### Falkon EHV

<b>Model</b>	ED6			
<b>Heating performance</b> kW	3		6	
<b>Air flow</b> m <sup>3</sup> /h	725			
<b>Electrical consumption</b> W	360			
<b>Weight</b> kg	6	5.5	6.4	5.7
<b>Ventilation speed levels</b>	3			
<b>Dimensions l x w x h</b> mm	341 x 432 x 167			
<b>Blower voltage</b> V DC	24	24	12	24
<b>PTC voltage</b> V	48 – 59	60 – 120	300 – 800	
<b>Part number</b>	830012219324	830012219173	830012028016	830012028160

# 3. VENTILATION – ROOF VENTILATORS

## VENTILATORS



### ADT

<b>Model</b>		Autogire
<b>Weight</b>	kg	0.9
<b>Dimensions l x w x h</b>	mm	245 x 245 x 113
<b>Part number</b>		830012140420

Non-electric ventilator. Works with the wind or the vehicle speed.



### ADT

<b>Model</b>		ADT 350	ADT 350	
<b>Air flow</b>	m <sup>3</sup> /h	315	629	
<b>Electrical consumption</b>	W	37	72	73
<b>Weight</b>	kg	1.5	1.5	
<b>Dimensions l x w x h</b>	mm	303 x 310 x 53		
<b>Blower voltage</b>	V	12	24	
<b>Part number</b>		830012140405	830012140406	830012140410



### ADT

<b>Model</b>		ADT 452				ADT 750	
<b>Air flow</b>	m <sup>3</sup> /h	629					
<b>Electrical consumption</b>	W	72	73	72	73	72	73
<b>Weight</b>	kg	1.8		1.7	1.8	2.1	
<b>Dimensions l x w x h</b>	mm	320 x 360 x 65				340 x 388 x 80	339 x 388 x 80
<b>Blower voltage</b>	V	12	24	24	12	12	24
<b>Part number</b>		830012140415	830012140416	830012140456	830012140458	830012140000	830012140100

## MOUNTING PLATES



### ADT mounting plates

Model	Sprinter	Master X62	Ducato
Weight		0.5	
Dimensions l x w x h	435 x 390 x 23		435 x 340 x 24
Part number	830034017041	830034017079	830034017130

# ROOF VENTILATORS

## AIR DIFFUSERS

### Rondo air diffusers



<b>Model</b>	BR black	BR gray	BR white	GR black	GR gray	GR white
<b>Weight</b> kg	0.3					
<b>Dimensions l x w x h</b> mm	22 x 280 x 280					
<b>Fixing type</b>	Screw					
<b>Part number</b>	830034003021	830034003036	830034003031	830034003020	830034003035	830034003030



### Basic lateral air diffusers

<b>Weight</b> kg	0.5
<b>Dimensions l x w x h</b> mm	38 x 282 x 282
<b>Fixing type</b>	Screw
<b>Part number</b>	830034003115



### Lateral air diffusers with LED

<b>Weight</b> kg	0.5
<b>Dimensions l x w x h</b> mm	38 x 282 x 282
<b>Fixing type</b>	Screw
<b>Voltage</b> V	12
<b>Part number</b>	830034003116

# WALL VENTILATORS



## ADP

<b>Model</b>	ADP 200		
<b>Air flow</b> m <sup>3</sup> /h	200		
<b>Electrical consumption</b> W	10		
<b>Weight</b> kg	0.4	0.3	0.9
<b>Ventilation speed levels</b>	2		
<b>Dimensions l x w x h</b> mm	150 x 150 x 77		
<b>Blower voltage</b> V	12	24	220
<b>Part number</b>	830012150001	830012150100	830012150110



# AXIAL FANS

## Fan and blower specification

VA	Axial fan
VR	Radial blower
VRS	Single radial blower
VRD	Double radial blower



### VA

Model	VA 90		VA 200*		VA 550
Air flow	90		200		550
Electrical consumption	3.6		10	16	86
Weight	0.5		0.3		0.9
Ventilation speed levels	1		2	1	1
Dimensions l x w x h	93 x 93 x 25		119 x 119 x 38	1,120 x 120 x 38	202 x 202 x 52
Blade diameter	NA				167
SPAL part number	NA				VA22BP11C50
Blower voltage	12	24	12	220	24
Part number	830012140602	830012140603	830012160020	830012150010	830012160102

\* Brushless.



### VA

Model	VA 630		VA 740
Air flow	630		740
Electrical consumption	68		68
Weight	1.2		0.9
Ventilation speed levels	3		1
Dimensions l x w x h	209 x 202 x 51		202 x 202 x 52
Blade diameter	NA		190
Blower voltage	12	24	24
Part number	830012160029	830012160040	830012160100

## VA

Model	VA 1270	VA 1360	VA 1800	VA 1860	
Air flow m <sup>3</sup> /h	1,270	1,360	1,800	1,860	
Electrical consumption W	224	113	180	130	
Weight kg	1.2	1.1	2.3	1.8	1.6
Ventilation speed levels	1				
Dimensions l x w x h mm	284 x 284 x 51		303 x 303 x 95	335 x 335 x 62	
Blade diameter Ø mm	255			305	
SPAL part number	VA11BP7C29S	VA11AP7/C57A	VA53AP70/LL-39A	VA10AP50C25A	VA10AP50C25A
Blower voltage V	24	12	12	12	12
Part number	830012140559	830012140554	830012140561	830012140572	830012140571

## VA

Model	VA 1950		VA 2800	VA 2860	
Air flow m <sup>3</sup> /h	1,950		2,800	2,860	
Electrical consumption W	150		130	180	234
Weight kg	2.2	2.3	2.4	2.4	2.3
Ventilation speed levels	1				
Dimensions l x w x h mm	303 x 303 x 95		335 x 335 x 62	331 x 331 x 95	
Blade diameter Ø mm	255		305		
SPAL part number	VA53BP70/LL-39A	VA15BP70/LL-39S	VA10BP50C25A	VA01BP70/LL-36A	VA01BP70/LL-36S
Blower voltage V	24	24	24	24	24
Part number	830012140564	830012140552	830012140573	830012140508	830012140516

# RADIAL BLOWERS

## SINGLE RADIAL BLOWERS



### VRS

Model	VRS 260		VRS 260 Ø 55		
Air flow	m <sup>3</sup> /h		260		
Electrical consumption	W		60		
Weight	kg	0.6	0.7	0.7	0.9
Ventilation speed levels			3		
Dimensions l x w x h	mm		113 x 119 x 128		131 x 126 x 149
SPAL part number	008A 10093D	008B 10093D	NA		
Blower voltage	V	12	24	12	24
Part number	830012130030	830012130012	830012130024	830012130013	



### VRS

Model	VRS 350				VRS 1065		
Air flow	m <sup>3</sup> /h				350	1,065	
Electrical consumption	W				120	643	
Weight	kg	1.3	1.1	1	1.1	2.2	
Ventilation speed levels					3		
Dimensions l x w x h	mm				145 x 139 x 165	213 x 428 x 140	73 x 175 x 211
SPAL part number	009A7074D	009B7074D	NA		007A5432D RA3VCB		
Blower voltage	V	12	24	12	24	12	
Part number	830012130001	830012130011	830012130512	830012130515	830012130019		

## DOUBLE RADIAL BLOWER



### VRD

Model	VRD 750		VRD 850		
Air flow	m <sup>3</sup> /h	750	850		
Electrical consumption	W	200	250	200	
Weight	kg	1.6	1.9	1.6	
Ventilation speed levels	3				
Dimensions l x w x h	mm	114 x 310 x 128		133 x 315 x 150	
SPAL part number		008A4502	008B4502	NA	006B4622
Blower voltage	V	12	24	12	24
Part number		830012120012	830012120004	830012140002	830012140003
				830012140517	



### VRD

Model	VRD 1000	VRD 1020	VRD 1050	VRD 1160
Air flow	m <sup>3</sup> /h	1,000	1,020	1,050
Electrical consumption	W	350	270	310
Weight	kg	2.5	2	2.3
Ventilation speed levels	3			
Dimensions l x w x h	mm	140 x 351 x 167	140 x 351 x 167	145 x 335 x 165
SPAL part number		NA	006A4522	009B4022
Blower voltage	V	24	12	24
Part number		830012120002	830012120014	830012130120
				830012120009

# 4. ACCESSORIES – AIR OUTLETS AND AIR DIFFUSION

## EVAPORATOR AND BLOWER HEATERS

### Alizé 2

<b>Model</b>	ED2 Ø 55	ED4 Ø 55
<b>Dimensions l x w x h</b> mm	11 x 133 x 129	
<b>Part number</b>	830034004343	830034004338



### Compact EV01/V02

<b>Model</b>	ED1 Ø 100	ED2 Ø 60*/**	ED3 Ø 60	ED3 Ø 55**	G	KC
<b>Dimensions l x w x h</b> mm	72 x 224 x 108		52 x 224 x 108	22 x 224 x 108	7 x 224 x 108	14 x 224 x 108
<b>Part number</b>	830034007979	830034007980	830034007981	830034007982	830034007432	830034003412

\* To screw.

\*\* Without connector.



### Compact EV02

<b>Model</b>	ED4 Ø 55
<b>Dimensions l x w x h</b> mm	53 x 224 x 108
<b>Part number</b>	830034007392



### Compact EV04

<b>Model</b>	White front
<b>Dimensions l x w x h</b> mm	38 x 615 x 128
<b>Connector (PAP duct)</b>	Yes
<b>Part number</b>	830034007963



### Super K

Model	ED4 Ø 55	G	KC
<b>Dimensions l x w x h</b> mm	55 x 264 x 108	12 x 264 x 110	38 x 265 x 106
<b>Part number</b>	830034007527	830034007348	830034007778

# AIR OUTLETS AND AIR DIFFUSION

## EVAPORATOR AND BLOWER HEATERS

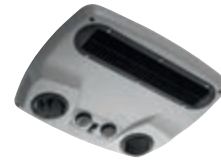
### Falkon

<b>Model</b>	ED6 Ø 55	KC	KC white
<b>Dimensions l x w x h</b> mm	51 x 336 x 131	38 x 336 x 139	29 x 336 x 106
<b>Connector (PAP duct)</b>	NA	NA	Yes
<b>Part number</b>	830034007075	830034017148	830034017582

### HK EV04

<b>Model</b>	ED5 Ø 60	ED8 Ø 70	KB chrome
<b>Dimensions l x w x h</b> mm	63 x 698 x 93	40 x 705 x 93	63 x 698 x 93
<b>Connector (PAP duct)</b>	Yes	Yes	No
<b>Fixing type</b>	Screw		
<b>Associated parts</b>	8300340083570	8300340083590	NA
<b>Part number</b>	830034017558	830034004345	830034017514

## ROOFTOP UNITS



### Klimatop

<b>Control unit</b>		No	Yes	
<b>Dimensions l x w x h</b>	mm	375 x 447 x 40	375 x 447 x 58	
<b>Fixing type</b>		Screw		
<b>Controller voltage</b>	V	NA	12	24
<b>Part number</b>		830034007365	830034007366	830034007367

### RK4

<b>Control unit</b>		Yes		
<b>Dimensions l x w x h</b>	mm	85 x 398 x 340		
<b>Weight</b>	kg	1		
<b>Blower voltage</b>	V	12	24	
<b>Part number</b>		830034003121	830034003122	

### Electric installation set

<b>Model</b>		RK4 CPE/CPF Installation set		
<b>Weight</b>	kg	2.7		
<b>Part number</b>		830070015583		



# AIR OUTLETS AND AIR DIFFUSION

## ROOFTOP UNITS

### RK9

Model	Without control unit	PCK2	PCK3			
Control unit	No	Yes				
Function	NA	HVAC		EHVAC		HV
Automatic or manual	NA	Auto	Manual			
Ventilation control (3 speeds or 0-100%)	NA	0 – 100	3	0 – 100	3	
Water temperature control	NA	Proportional	Manual			
PTC heater control	NA			3 positions		NA
Air recycling control	NA		Yes	No		
A/C control	NA	Yes		Yes	No	
Defrosting control	NA	Yes	No			
Type On-Off / 4 positions	NA		4 positions			
Fixing type	Screw					
Dimensions l x w x h mm	50 x 440 x 505					
Weight kg	1.3	1.7				
Controller voltage V	NA	12/24	12/24	24	12/24	12/24
Part number	830034017759	830034017774	830034017781	830034017773	830034017782	830034017780



### RK12/14

Model	RK12*		RK12/14 white**	
Control unit	No			
Dimensions l x w x h mm	452 x 702 x 74		606 x 792 x 89	
Weight kg	0.5		2.9	
Connector (PAP duct)	No		Yes	
Fixing type	Screw			
Part number	830034017011		830034003414	

\* Without air recycling.

\*\* With two air recycling grilles and filter.

## LOUVERS



### KE

Model		Without spring	With spring
Cutout size	mm	47	47
External diameter	mm	49	49
Fixing type		Clip	Spring
Part number		830034011241	830034011240



### KF

Model		Without connector, black	Without connector, chrome
Cutout size	mm	55	
External diameter	mm	60	
Fixing type		Clip	
Fixing thickness	mm	2 – 7.5	
Connector (PAP duct)		Yes	
Associated parts		Kaledonia range	
Part number		830034011242	830034011387



### KF

Model		With connector Ø 20	With connector Ø 40	With connector Ø 50
Cutout size	mm	55		
External diameter	mm	60		
Fixing type		Clip		
Fixing thickness	mm	2 – 7.5		
Connector (PAP duct)		No		
Associated parts		Kaledonia range		
Part number		830034011382	830034011383	830034011384

# AIR OUTLETS AND AIR DIFFUSION

## LOUVERS

### KF connector

Model	Ø 40	Ø 50
External diameter mm	56	54
Fixing type	Clip	
Connector (PAP duct)	Yes	
Part number	830034007255	830034007911



### KC

Model	Without spring, black	Without spring, gray
Cutout size mm	69	
External diameter mm	74	
Fixing type	Clip	
Fixing thickness mm	2	
Connector (PAP duct)	No	
Part number	830034011200	830034011201



### KC

Model	With spring, black	With spring, gray
Cutout size mm	69	
External diameter mm	74	
Fixing type	Spring	
Fixing thickness mm	2	
Connector (PAP duct)	No	
Part number	830034011205	830034011206



## KB

Model	With spring, black		With
Cutout size	mm	77	
External diameter	mm	84	
Fixing type	Spring		
Connector (PAP duct)	No		
Part number	830034011107		830034011108



## KB

Model	Without connector, black	Without connector, gray	Without connector, chrome
Cutout size	mm	77	
Fixing type	Clip		
Fixing thickness	mm	2 – 5	
Connector (PAP duct)	No		
Associated parts	Kaledonia range		
Part number	830034011100	830034011101	830034011106

# AIR OUTLETS AND AIR DIFFUSION

## LOUVERS



### KB

<b>Model</b>		With connector
<b>Cutout size</b>	mm	77
<b>External diameter</b>	mm	84
<b>Fixing type</b>		Clip
<b>Fixing thickness</b>	mm	2 – 5
<b>Connector (PAP duct)</b>		Yes
<b>Associated parts</b>		Kaledonia range

### KB – with connector

Ø Connector	Black	Chrome
Ø 40	830034011140	830034011340
Ø 45	830034011145	-
Ø 50	830034011150	830034011350
Ø 55	830034011155	830034011355
Ø 60	830034011160	830034011360
Ø 65	830034011165	-
Ø 70	830034011170	830034011370

### KB with connector 18°

Ø Connector	Black	Gray	Chrome
Ø 45	830034011118	830034011119	830034011120

### KB with elbow connector 90°

Ø Connector	Black	Chrome
Ø 45/55	83003401190	830034011356



### KB

<b>Model</b>	With grille	
<b>Cutout size</b> mm	77	
<b>External diameter</b> mm	84	
<b>Fixing type</b>	Clip	
<b>Fixing thickness</b> mm	2 – 5	
<b>Connector (PAP duct)</b>	Yes	
<b>Associated parts</b>	Kaledonia range	
<b>Part number</b>	83003401191	

### KB – internal protective grid

<b>External diameter</b> mm	77
<b>Fixing type</b>	Clip
<b>Part number</b>	8300340170780

# AIR OUTLETS AND AIR DIFFUSION

## LOUVERS



KA

Model	Without connector, black	Without connector, gray
Cutout size mm	77	
Fixing type	Clip	
Fixing thickness mm	1.5 – 7	
Connector (PAP duct)	No	
Associated parts	Kaledonia range	
Part number	830034011000	830034011001



KA

Model	With connector
Cutout size mm	77
Fixing type	Clip
Fixing thickness mm	1.5 – 7
Connector (PAP duct)	Yes
Associated parts	Kaledonia range

KA – with connector

∅ Connector	Black
∅ 40	830034011040
∅ 45	830034011045
∅ 50	830034011050
∅ 55	830034011055
∅ 60	830034011060
∅ 65	830034011065
∅ 70	830034011070

### KA with connector 18°

Ø Connector	Black	Gray
Ø 45	830034011018	830034011019



### KA with elbow connector 90°

Ø Connector	Black
Ø 45/55	830034011059



### KA

Model	Screw-fit
Cutout size mm	77
Fixing type	Screw
Connector (PAP duct)	No
Associated parts	Kaledonia range
Part number	830034011005

### KG

Model	With spring, black	With spring, chrome
Cutout size mm	77	
Fixing type	Spring	
Connector (PAP duct)	No	
Associated parts	Kaledonia range	
Part number	830034008907	830034008908



# AIR OUTLETS AND AIR DIFFUSION

## LOUVERS



KG

Model	Without connector, black	Without connector, gray
Cutout size mm	77	
Fixing type	Clip	
Fixing thickness mm	2 – 5	
Connector (PAP duct)	No	
Associated parts	Kaledonia range	
Part number	830034008900	830034008901



KG

Model	With connector
Cutout size mm	77
Fixing type	Clip
Fixing thickness mm	2 – 5
Connector (PAP duct)	Yes
Associated parts	Kaledonia range

### KG with connector

∅ Connector	Black	Gray	Chrome
∅ 40	830034008940	830034008941	830034008942
∅ 45	-	830034008946	830034008947
∅ 50	830034008950	830034008951	830034008952
∅ 55	830034008955	830034008956	830034008957
∅ 60	830034008960	830034008961	830034008962
∅ 65	830034008965	830034008966	830034008969
∅ 70	830034008970	830034008971	830034008972



KG with elbow connector 90°

Ø Connector	Black
Ø 55/45	830034008990



KG

Model	Screw-fit
Cutout size mm	77
Fixing type	Screw
Associated parts	Kaledonia range
Part number	830034008909



Twist base

External diameter mm	96
Fixing type	Screw
Connector (PAP duct)	Yes
Associated parts	KB and KG
Part number	830034011500

# AIR OUTLETS AND AIR DIFFUSION

## LOUVERS

### Kaledonia connector

<b>Model</b>		Ø 45	Ø 45 18°	18°
<b>Cutout size</b>	mm	77	48	77
<b>External diameter</b>	mm	NA	76	NA
<b>Fixing type</b>			Clip	
<b>Fixing thickness</b>	mm	2 – 5	NA	2 – 5
<b>Connector (PAP duct)</b>			Yes	
<b>Associated parts</b>		Kaledonia range	KA, KB, KG range	PAP duct range
<b>Part number</b>		830034008945	830034008218	830034008918



### KL

<b>Model</b>		Without spring	With spring
<b>Cutout size</b>	mm		93
<b>External diameter</b>	mm		97
<b>Fixing type</b>		Clip	Spring
<b>Fixing thickness</b>	mm	3.2	NA
<b>Connector (PAP duct)</b>			No
<b>Part number</b>		830034011371	830034011372

KM



Model	Without connector, black	Without connector, chrome
Cutout size	mm	100
External diameter	mm	108
Fixing type		Clip
Fixing thickness	mm	2 – 5
Connector (PAP duct)		No
Part number	830034011373	830034011385

3-flap



Cutout size	mm	83
External diameter	mm	87
Fixing type	Clip	Spring
Fixing thickness	mm	8
Connector (PAP duct)		No
Part number	830034011505	830034011516

# AIR OUTLETS AND AIR DIFFUSION

## RECTANGULAR LOUVERS



KD

Model	Black		Chrome	Black		Chrome
	Customer interface/ cutting dimensions	122 x 50 (132 for screws)	150 x 34 (160 for screws)	122 x 50 (132 for screws)	122 x 50	149.7 x 34
Dimensions l x w x h	144 x 27 x 52	176 x 23 x 37	144 x 27 x 52	132 x 27 x 52	157 x 23 x 37	132 x 27 x 52
Fixing type	Clip / Screw			Clip		
Fixing thickness	2.4 – 3.5	2.25 – 3.7	2.4 – 3.5	2.4 – 3.5	2.25 – 3.7	2.4 – 3.5
Connector (PAP duct)	No					
Associated parts	830034007082	NA	830034007082	830034007082	NA	830034007082
Part number	830034008031	830034008033	830034008034	830034008030	830034008032	830034008035



QDC connector

Model	Ø 55					
Customer interface/ cutting dimensions	mm	55.5 x 128				
Dimensions l x w x h	mm	60 x 140 x 48				
Fixing type	Screw					
Associated parts	830034070024 / 830034008004					
Part number	830034007082					



KH

Customer interface/ cutting dimensions	mm	122 x 50	
Dimensions l x w x h	mm	143 x 30 x 54	
Fixing type		Clip / Screw	Clip
Fixing thickness	mm	1.9 – 4.6	
Connector (PAP duct)		No	
Associated parts		830034007082	830034007082
Part number		830034003410	830034003411

# AIR OUTLETS AND AIR DIFFUSION

## GRILLES



### Adjustable and closable grille

Customer interface/ cutting dimensions	mm	145 x 32
Dimensions l x w x h	mm	35 x 164 x 29
Fixing type		Screw
Connector (PAP duct)		No
Part number		830034022059



### Closable grille

Customer interface/ cutting dimensions	mm	169 x 32
Dimensions l x w x h	mm	40 x 200 x 29
Fixing type		Screw
Part number		830034022036



### QDC connectors

Model		Ø 40	Ø 55
Customer interface/ cutting dimensions	mm	NA	40 x 174
Dimensions l x w x h	mm	68 x 200 x 39	40 x 197 x 73
Fixing type		Screw	
Part number		830034024060	830034007078

### Round grilles



Model	Black		Gray	Black	Gray	Black			
Cutout size	mm	NA	69			NA			
Dimensions l x w x h	mm	50 x 50 x 14	74 x 74 x 18	74 x 74 x 18	74 x 74 x 21	74 x 74 x 21	80 x 80 x 16	107 x 107 x 24	225 x 225 x 6
External diameter	mm	50	74	74	74	74	80	107	225
Fixing type	Clip			Spring		Clip	Spring	Clip	
Fixing thickness	mm	43	1 – 10		NA		70	NA	
Part number	830034022012	830034022059	830034022059	830034022059	830034022059	830034022059	830034022059	830034022059	830034022059

### Single grilles



Model	Black		Gray
Customer interface/ cutting dimensions	mm	169 x 33	
Dimensions l x w x h	mm	40 x 192 x 9	40 x 192 x 9
Fixing type	Screw		
Part number	830034022003		830034022031

### Paddle grilles



Model	Black	Gray	Black	White	Black	White	
Customer interface/ cutting dimensions	mm	170 x 33		147.5 x 130		305 x 130	
Dimensions l x w x h	mm	40 x 192 x 7		140 x 156 x 18		140 x 314 x 18	140 x 314 x 18
Fixing type	Screw						
Part number	830034022015	830034022026	830034022040	830034022043	830034022038	830034022042	



# AIR OUTLETS AND AIR DIFFUSION

## GRILLES

### Defrosting grilles



Model	Black		Gray	Black 45°
Customer interface/ cutting dimensions	mm	182 x 33	71 x 8	220 x 25
Dimensions l x w x h	mm	47 x 205 x 26	14 x 86 x 11	40 x 244 x 15
Fixing type	Screw			
Associated parts	830034007078		NA	
Part number	830034007077	830034022010	830034022025	830034022006

### P.A. grilles



Customer interface/ cutting dimensions	mm	331 x 67	166 x 69
Dimensions l x w x h	mm	90 x 383 x 7	90 x 214 x 8
Fixing type	Screw		
Part number	830034022050	830034022016	

### Recycling grilles

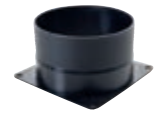


Model	With paper filter			Without paper filter	
Customer interface/ cutting dimensions	mm	136 x 326	366 x 72	516 x 72	NA
Dimensions l x w x h	mm	30 x 347 x 154	115 x 400 x 33	115 x 550 x 33	10 x 347 x 154
Fixing type	Screw				
Part number	830034022071	830034022055	830034022051	830034017660	830034007793

### Paper filter

Model	400	550	
Weight	g	72	100
Dimensions l x w x h	mm	356 x 77 x 20	506 x 77 x 20
Part number	8300340702690	8300340702700	

## CONNECTORS



### Air duct connectors

Dimensions l x w x h	mm	76 x 76 x 30	90 x 28 x 90	108 x 60 x 108
External diameter	mm	65		NA
Fixing type		Clip		Screw
Associated parts		PAP duct range		NA
Part number		830034024242	830034024032	830034024030

## BUTTERFLY JUNCTIONS



Model		Mechanical shutter junction	Electric shutter junction	Additional flap for shutter junction
Dimensions l x w x h	mm	59 x 88 x 72	61 x 115 x 86	33 x 86 x 60
Voltage	V	NA	12 – 24	NA
Fixing type			Screw	
Connector (PAP duct)			Yes	
Associated parts			Connector to screw range	
Part number		830034024168	830034024169	830034024171

# AIR OUTLETS AND AIR DIFFUSION

## REDUCERS



### Reducers

Model	Ø 45/40	Ø 50/40	Ø 50/45	Ø 55/40	Ø 55/45	Ø 55/50
External diameter mm	81					
Fixing type	Clip					
Connector (PAP duct)	Yes					
Associated parts	PAP duct range					
Part number	830034024094	830034024019	830034024020	830034024019	830034024018	830034024035

### Reducers

Model	Ø 55/55	Ø 55/60	Ø 60/40	Ø 60/45	Ø 60/50
External diameter mm	76	81			
Fixing type	Clip				
Connector (PAP duct)	Yes				
Associated parts	PAP duct range				
Part number	830034024035	830034024090	830034024089	830034024096	830034024091

## Y CONNECTORS



### Y connector

<b>Model</b>	40 x 40 x 40	45 x 40 x 40	45 x 45 x 40	50 x 40 x 40	50 x 45 x 45	50 x 50 x 50
<b>Dimensions l x w x h</b> mm	81 x 79 x 103					
<b>Connector (PAP duct)</b>	Yes					
<b>Associated parts</b>	PAP duct range					
<b>Part number</b>	830034024070	830034024085	830034024098	830034024075	830034024076	830034024079

### Y connector

<b>Model</b>	55 x 40 x 40	55 x 50 x 50	55 x 55 x 50	55 x 55 x 40
<b>Dimensions l x w x h</b> mm	81 x 79 x 103			
<b>Connector (PAP duct)</b>	Yes			
<b>Associated parts</b>	PAP duct range			
<b>Part number</b>	830034024077	830034024079	830034024084	830034024095

### Y connector

<b>Model</b>	60 x 40 x 40	60 x 45 x 40	60 x 45 x 45	60 x 50 x 50	60 x 55 x 55	60 x 60 x 40	60 x 60 x 55	60 x 60 x 60
<b>Dimensions l x w x h</b> mm	81 x 79 x 103						NA x NA x 58	81 x 79 x 103
<b>External diameter</b> mm	NA						81	NA
<b>Connector (PAP duct)</b>	Yes							
<b>Associated parts</b>	PAP duct range							
<b>Part number</b>	830034024080	830034024087	830034024081	830034024082	830034024083	830034024088	830034024083	830034024099

### Y connector

<b>Model</b>	With flap 40 x 40 x 40	With flap 45 x 45 x 45	With flap 50 x 50 x 50	With flap 55 x 55 x 55	With flap 60 x 60 x 60	With high temperature flap	Compact Ø 55 ext or Ø 45 int
<b>Dimensions l x w x h</b> mm	87 x 79 x 103					88 x 121 x 103	NA x NA x 86
<b>Connector (PAP duct)</b>	Yes						
<b>Associated parts</b>	PAP duct range						
<b>Part number</b>	830034024110	830034024111	830034024112	830034024113	830034024114	830034024214	830034008999

# AIR OUTLETS AND AIR DIFFUSION

## AIR DUCTS

### PAP duct

Internal diameter	mm	40	45	50	55	60	65
Part number		830034070015	830034070002	830034070003	830034070004	830034070005	830034070006

Curvature radius 1 mm.  
Fluid: air.

### PAP duct

Internal diameter	mm	70	75	80	90	100
Part number		830034070016	830034070007	830034070017	830034070030	830034070029

Curvature radius 1 mm.  
Fluid: air.

### PAP duct – 5-meter roll

Internal diameter	mm	40	45	50	55
Part number		830034070021	830034070022	830034070023	830034070024

Curvature radius 1 mm.  
Fluid: air.

### PAP duct – 5-meter roll

Internal diameter	mm	60	65	70	80
Part number		830034070025	830034070026	830034070027	830034070028

Curvature radius 1 mm.  
Fluid: air.

# CONTROL UNITS

## REMOTE CONTROLS



Model	Rotary		Axial	
Dimensions l x w x h mm	55 x 70 x 52		24 x 88 x 24	
Cable length mm	500	1,000	1,000	1,700
Part number	830034001710	830034001711	830034001127	830034001198

## CONTROL PANELS



### PCK2

Function	HVAC		EHVAC
Automatic or manual	Automatic		
Ventilation control (3 speeds or 0 – 100%)	0 – 100		
Water temperature control	Proportional		NA
Air recycling control	Yes	No	No
A/C control	Yes		
Defrosting control	Yes		
Dimensions l x w x h mm	63 x 123 x 63		
Cutout size mm	53.5 x 114		
Fixing thickness mm	1.5 – 3		
Voltage V	12 / 24		
Part number	830034030371	830034030370	830034030372

Probes included.

# CONTROL UNITS

## CONTROL PANELS



### PCK3

Function	EHV		HV			
	Automatic or manual			Manual		
Ventilation control (3 speeds or 0 – 100%)			3			
Water temperature control	NA	Proportional		Manual	Proportional	
PTC heater control	3 positions		NA			
Air recycling control	No	Yes		No		
A/C control	No					
Defrosting control	No					
Dimensions l x w x h	mm	60 x 123 x 63	65 x 123 x 63	99 x 123 x 63	65 x 123 x 63	
Voltage	V	12 / 24				
Part number		830034030465	830034030466	830034030452	830034030461	830034030471 830034030473

### PCK3

Function	VAC	HVAC			EHVAC		
	Automatic or manual						
Ventilation control (3 speeds or 0 – 100%)						3	0 – 100
Water temperature control	NA	Proportional		Manual	NA		
PTC heater control	NA				3 positions		
Air recycling control	No	Yes		No	Yes	No	
A/C control	Yes						
Defrosting control	No						
Dimensions l x w x h	mm	60 x 123 x 63	65 x 123 x 63	99 x 123 x 63	60 x 123 x 63	154 x 123 x 63	
Voltage	kg	12 / 24					24
Part number		830034030474	830034030451	830034030453	830034030460	830034030462	830034030458 830034030459 830034030472

## PCK3



<b>Model</b>	Airtronic 2		Hydronic S3		
<b>Function</b>	VAC / Airtronic 2		EHVAC / Hydronic		
<b>Automatic or manual</b>	Manual				
<b>Ventilation control (3 speeds or 0 – 100%)</b>	0 – 100		3		
<b>Water temperature control</b>	NA		Proportional		
<b>PTC heater control</b>	ON – OFF				
<b>Air recycling control</b>	No				
<b>A/C control</b>	Yes				
<b>Defrosting control</b>	No				
<b>Voltage</b>	V	12	24	12	24
<b>Part number</b>		830034030629	830034030630	830034030627	830034030628



# CONTROL UNITS

## SWITCHES



### Rotary switches

<b>Dimensions l x w x h</b>	mm	25 x 25 x 49	33 x 33 x 12	56 x 56 x 59	29 x 27 x 49	32 x 25 x 29*
<b>Type On-Off / 4 positions</b>		4 positions	NA	4 positions	4 positions	On – Off – On
<b>Breaking capacity</b>	A/V	20	NA	NA	20	20 / 28
<b>Part number</b>		830034030004	830034030061	830034030608	830034030005	830034030001

\* Reversing rotary switch



### 5-way connector

<b>Dimensions l x w x h</b>	mm	21 x 28 x 22
<b>Part number</b>		830034005217



### Rocker switches

<b>Dimensions l x w x h</b>	mm	21 x 15 x 28	21 x 14 x 33	32 x 14 x 33*	20 x 20 x 25**
<b>Type On-Off / 4 positions</b>		On – Off – On	On – Off	On – Off	On – Off
<b>Breaking capacity</b>	A/V	10 / 18	12 / 28	10 / 28	10 / 28
<b>Voltage</b>	V	NA	NA	12	24
<b>Part number</b>		830034030008	830034030028	830034030077	830034030078
				830034030078	830034030580

\* Air conditioning switch.

\*\* Switch green LED.

### PWM controller

<b>Dimensions l x w x h</b>	mm	34 x 56 x 86
<b>Voltage</b>	V	12 / 24
<b>Part number</b>		830034030260

## CONTROL ACCESSORIES

### Knobs



<b>Model</b>	K9 knob		K10 knob and clip black	K11 knob chrome	K12 knob chrome
<b>Dimensions l x w x h</b> mm	33 x 33 x 18		33 x 33 x 19	40 x 40 x 26	42 x 42 x 21
<b>Part number</b>	830034030572	830034030573	830034030575	830034017094	830034017097

### Collars



<b>Model</b>	White arrow	0-I-II-III	Red arrow clockwise	Red arrow counterclockwise
<b>Dimensions l x w x h</b> mm	55 x 55 x 12			
<b>Part number</b>	830034030020	830034030033	830034030021	830034030034

### Collars

<b>Model</b>	With stop and AC printing	Air direction printing		Heating printing	HVAC printing
<b>Dimensions l x w x h</b> mm	56 x 56 x 12				
<b>Part number</b>	830034017484	830034017485	830034017486	830034017487	830034017488

# AIR CONDITIONING

## RECEIVER DRYERS



Vertical or horizontal	V			H
Weight g	1,000	800	825	895
Male or female	M/M	M/F	M/M	M/F
Thread $\emptyset$	5/8" – 18 UNF			
Dimensions l x w x h mm	76 x 76 x 230	64 x 64 x 210	64 x 64 x 209	80 x 80 x 267
Part number	830070004001	830070004003	830070004005	830070004006



### Bracket

Dimensions l x w x h mm	40 x 99 x 67
Part number	830070004301

## PRESSURE SWITCHES

### Binary



Model	Male pressure switch 3/16"	Female pressure switch 3/16"	Female pressure switch 1/4"	Female pressure switch with sealed connector
Low / medium / high pressure	bar	2 / 25	0.4 / 2	2 / 27
Thread	3/8 – 24 UNF		7/16 – 20 UNF	
Compatible refrigerant	R134a / R1234yf			
Dimensions l x w x h	mm	21 x 21 x 45	29 x 29 x 47	24 x 24 x 189
Part number	830070002003	830070002004	830070002005	830070002017

### Trinary



Model	Male pressure switch 3/16"
Low / medium / high pressure	bar
Thread	3/8 – 24 UNF
Compatible refrigerant	R134a / R1234yf
Dimensions l x w x h	mm
Part number	830070002001

# AIR CONDITIONING

## EXPANSION VALVES

<b>Model</b>	2T screw-fit expansion valve	1.5T screw-fit expansion valve
<b>Dimensions l x w x h</b> mm	45 x 85 x 25	
<b>Part number</b>	830070001001	830070001002

## ADAPTER SETS

<b>Model / Chassis</b>	EMP2	X250 rear option	X250	A5 (2015-2020)	W463	W447	Type SY/SZ
<b>Vehicle</b>	Berlingo, Combo life, ProAce City, Rifter	Boxer, Jumper, Ducato		Caddy IV	Class G 2nd generation 2018	Class V, Vito	Crafter, TGE
<b>Part number</b>	830070001401	830070001168	830070001176	830070001324	830070001274	830070001400	830070001370

## ADAPTER SETS

Model / Chassis	Iveco daily	X67	Hilux/Land Cruiser J200	Hyundai H350	K0	K0 rear option	CMF – CD
Vehicle	Daily	Dokker Van	Hilux, Land Cruiser J200	Hyundai H350	Jumpy, Expert, ProAce, Dispatch		Kangoo 3
Part number	830070001302	830070001253	830070001266	830070001359	830070001325	830070001346	830070001413

Model / Chassis	X62 FWD		Nissan NV200	W907	X82	V363/V362	A-series	A5 (2010 – 2015)/ T platform
Vehicle	Master, NV400		Nissan NV200	Sprinter	Trafic, NV300	Transit, Transit custom	VW Amarok	VW Caddy 3 (phase 2), T5, T6
Part number	830070001199	830070001303	830070001354	830070001372	830070001285	830070001272	830070001246	830070001111

# AIR CONDITIONING

## SPARE PARTS

### Valve core

Dimensions l x w x h mm	5 x 5 x 20
Part number	830070006500

## REGULATION

### Standard mechanical thermostat



Dimensions l x w x h mm	31.5 x 52 x 62
Part number	830070003000

### Electronically adjustable thermostats



Model	Electric thermostat with sensor		Electronic thermostat with axle	Electronic thermostat without axle	Electronic regulation	Electronic thermostat
Dimensions l x w x h mm	32 x 42 x 57		43 x 62 x 51	43 x 62 x 34	52 x 62 x 47	52 x 62 x 34
Voltage V	12	24	12 – 24		12 – 24	
Part number	830070003001	830070003002	830070011000	830070011001	830070011002	830070011201

### Probes

Model	Antifreeze probe	Air mixing probe
Dimensions l x w x h mm	800 x 5.5 x 6	800 x 4.5 x 5
Part number	8300700110100	8300700110230

## REGULATION



### A/C solenoid O-ring male

Electrical consumption	W	10	12.5	10
Electrical power	W	10	12.5	10
Size (M06 to M12)		M06		
Fluid		Gas		
Fluid temperature range	°C	-30 / +80		
Pressure range	bar	0 – 30		
External diameter Ø		M06		
Thread pitch		5/8 – 18UNF		
Voltage	V	12	24	12
Compatible refrigerant		R134a / R1234yf		
Accessories		NA		2-way connector
Dimensions l x w x h	mm	39 x 64 x 54		
Part number		830070003050	830070003051	830070003052

### A/C solenoid valve bracket

Dimensions l x w x h	mm	2 x 37 x 71
Part number		830034004239



# AIR CONDITIONING

## MISCELLANEOUS ACCESSORIES



### Compressor oils

Type	SP10 – PAG ISO 46	SP20 – PAG ISO 100	HD46 R1234yf
Content ml	250		
Part number	830070006003	830070006002	830070006041

### Sealing strip

Model	Butyl sealing strip with a non-sticky side		
Dimensions W x H mm	50 x 2		
Part number	830070006036		

# WATER PUMPS

<b>Water connection</b>	∅ mm	16	20
<b>Flow</b>	l/h	900	1,020
<b>Max. pressure</b>	bar	2.5	
<b>Electric power</b>	W	20	
<b>Fluid temperature range</b>	°C	-40 / +100	
<b>Lifetime</b>	h	5,000	
<b>Weight</b>	g	658	500
<b>Dimensions l x w x h</b>	mm	177 x 85 x 68	
<b>Voltage</b>	V	12	24
<b>Part number</b>		830034094001	830034094002

Collars included.

# VALVES

## MECHANICAL HEATING VALVES



### Brass valves

External diameter Ø	mm	15	18	15	18	15	18
Fluid		Water					
Dimensions l x w x h	mm	60 x 80 x 44		34 x 58 x 42		78 x 58 x 62	
Accessories		NA		Lever		Knob	
Part number		830034006041	830034006042	830034006050	830034006051	830034006029	830034006030



### Plastic valves

External diameter Ø	mm	16	12	16	12	16	12	16	
Pressure range	bar	0 – 3	0 – 3		NA		NA		
Fluid		Water							
Dimensions l x w x h	mm	51 x 92 x 89	35 x 84 x 35		35 x 84 x 57		40 x 84 x 42	45 x 113 x 48	
Accessories		NA			Knob				
Fluid temperature range	°C	-40 / +120	-40 / +90		NA		Max. 85		
Part number		830034050003	830034050017	830034050015	830034050050	830034050051	830034050001	830034050002	

## PROPORTIONAL HEATING VALVES

<b>Model</b>	In/Out 90°		3-way
<b>External diameter Ø</b>	mm	16	
<b>Pressure range</b>	bar	0 – 6	
<b>Fluid</b>	Water		
<b>Dimensions l x w x h</b>	mm	36 x 102 x 109	74 x 113 x 89
<b>Electrical power</b>	W	4.2	8.4
<b>Fluid temperature range</b>	°C	-40 / +100	
<b>Differential pressure</b>	bar	2.5	
<b>Voltage</b>	V	12	24
<b>Blower voltage</b>	V	NA	
<b>Part number</b>	830034050029		830034050030
			830034050052

## SOLENOID VALVES



<b>Model</b>	Plastic solenoid valve	Metal solenoid valves				Electric solenoid valves		
<b>External diameter Ø</b>	mm	16	16	20	16	20	16	16
<b>Differential pressure</b>	bar	1	1.2		10		1.2	
<b>Fluid</b>	Water							
<b>Dimensions l x w x h</b>	mm	41 x 104 x 69	47 x 99 x 95	47 x 111 x 95	47 x 108 x 111	47 x 120 x 111	47 x 99 x 95	47 x 111 x 95
<b>Electrical power</b>	W	3	18					
<b>Fluid temperature range</b>	°C	-20 / +100	-25 / +100		-30 / +100		-25 / +100	
<b>Voltage</b>	V	12	24		24		12	
<b>Thread pitch</b>		NA				1/2		
<b>Part number</b>	830034052006	830034052015	830034052016	830034052019	830034052020	830034052017	830034052018	830034052021

# WATER SYSTEM CONNECTORS

## HEATING BULKHEADS



Model	Straight bulkhead connector		Elbow bulkhead connector	Brass bulkhead connector	
	Diameter X mm	16	12	16	1/2"
Diameter Y mm	16	16	16	—	98
Fixing type	Screw				
Dimensions l x w x h mm	42 x 90 x 51	51 x 90 x 42	42 x 90 x 51	33 x 32	98 x 28
Part number	830034007062	830034017034	830034007063	830034024039	830034024059

## DUCK BILL VALVES

Dimensions l x w x h mm	13 x 13 x 28
Part number	830070000201

## HEATING CONNECTORS



### Brass connectors

Dimensions l x w x h	mm	21 x 35 x 21		21 x 41 x 21
Diameter X	mm	14 – 1/2	16 – 1/2	20 – 1/2
Fluid		Water		
Part number		830034024067	830034024005	830034024038



### Elbow connectors

Dimensions l x w x h	mm	43 x 43 x 16			46 x 46 x 21		47 x 47 x 22	
Diameter Y	mm	10	12	14	16	19	22	
Diameter Z	mm	10	12	14	16	19	22	
Fluid		Water						
Part number		830034008410	830034008412	830034008414	830034008416	830034008419	830034008422	830034008430



### Y connector

Dimensions l x w x h	mm	54 x 84 x 22
Diameter X	mm	19
Diameter Y	mm	19
Diameter Z	mm	19
Fluid		Water
Part number		830034024058



### Multi Y connectors

Dimensions l x w x h	mm	72 x 102 x 21
Diameter X	mm	16 / 19
Diameter Y	mm	16 / 19
Diameter Z	mm	16 / 19
Fluid		Water
Part number		830034024045

# WATER SYSTEM CONNECTORS



## Straight connectors

<b>Dimensions l x w x h</b>	mm	20 x 65 x 16	27 x 65 x 22	30 x 65 x 22*	27 x 65 x 22	27 x 65 x 22	35 x 65 x 22*	27 x 65 x 22	27 x 65 x 24
<b>Diameter X</b>	mm	12	16	16	19	19	19	22	22
<b>Diameter Y</b>	mm	12	16	16	29	16	19	22	16
<b>Fluid</b>		Water							
<b>Part number</b>		830034008312	830034008316	830034008616	830034008319	830034008330	830034008619	830034008322	830034008331

\* Screw included to purge the heating loop.



## Tee connectors

<b>Dimensions l x w x h</b>	mm	43 x 65 x 16			46 x 65 x 22			46 x 65 x 22	42 x 68 x 17	56 x 90 x 21
<b>Diameter X</b>	mm	10	12	14	16	16	19	22	16 – 1/2	16/19
<b>Diameter Y</b>	mm	10	12	14	16	16	19	22	NA	16/19
<b>Diameter Z</b>	mm	10	12	14	16	14	19	16	NA	16/19
<b>Fluid</b>		Water								
<b>Part number</b>		830034008510	830034008512	830034008514	830034008516	830034008531	830034008519	830034008530	830034024006	830034024063

# PIPES

## HEATER HOSES



### Heater hoses

Internal diameter	mm	10	12	14	16	19
External diameter	mm	17	19	21	23	26
Curvature radius	mm	70	70	95	105	125
Fluid		Water				
Working pressure	bar	6				
Operating temperature range	°C	-40 to +120				
Standard		SAEJ20R3				
Part number		830034072004	830034072000	830034072001	830034072002	830034072003



### L hoses

Internal diameter	mm	16
External diameter	mm	24
Fluid		Water
Operating temperature range	°C	-40 to +120
Standard		SAEJ20R3
Part number		830034072014



# PIPES

## A/C HOSES

### 25 m reduced hoses

Model	M06	M08	M10	M12	
Weight	kg	3.6	4.6	4.8	7.2
Internal diameter	mm	5 / 16	13 / 32	1 / 2	5 / 8
External diameter	mm	15	17	19	23.5
Curvature radius	mm	51	64	76	102
Fluid	Gas				
Working pressure	bar	34.5			
Operating temperature range	°C	-40 to +120			
Standard	SAE J2064 Type C Class1				
Part number	830070017307	830070007956	830070007957	830070017781	

## CLAMPS

### Hose clamps

Model	Oetiker 15.3	Oetiker 18	Oetiker 19.2	Oetiker 19.8
Size	M06	M08	NA	M10
Part number	830034005435	830034005436	830034005410	830034005437

### Spring hose clamps

Model	Ø 17	Ø 21	Ø 22	Ø 26	Ø 29
Part number	830034005183	830034005182	830034005180	830034005181	830034005185

## PROTECTIVE DUCTS



### Aluminum ducts

Operating temperature range °C	-40 to +500
Part number	830034070080



### Spiral protective ducts

Internal diameter mm	16	20	22	25	28	22*
External diameter mm	18.5	22.5	24.5	27.5	30.5	31
Operating temperature range °C	-30 to +90					+10 to +105
Standard	NA					NF EN 14304
Part number	830034070095	830034070096	830034070090	830034070091	830034070093	830070006012

\* Insulating material, no mechanical protection.

### Slit corrugated sleeving

Model		For M06	For M08	For M10 & M12
Internal diameter mm		15	19	23
External diameter mm		18	22	26
Operating temperature range °C		-30 to +100		
Part number		830034070068	830034070069	830034070074

**NEDERLAND**  
**EBERCA B.V**  
**MARONISTRAAT 2**  
**3281 NB NUMANSDORP**

**T +31 (0) 186 621955**  
**E [info@eberca.nl](mailto:info@eberca.nl)**  
**W. [www.eberca.nl](http://www.eberca.nl)**

**BELGIE/LUXEMBOURG**  
**EBERCA BV**  
**ESPERANTOLAAN 2**  
**B-3001 LEUVEN-HEVERLEE**

**T +32 (0) 16 402500**  
**E [sales@eberca.be](mailto:sales@eberca.be)**  
**W. [www.eberca.be](http://www.eberca.be)**

Wij behouden ons het recht voor om eventuele wijzigingen door te voeren in uitvoering en technische specificaties. Aan de vermelde specificaties kunnen geen rechten worden ontleend. Druk- en of zetfouten voorbehouden.

**5.000 servicepunten**

Wereldwijd heeft Eberspächer meer dan 5.000 servicepunten. Deze erkende en voortdurend geschoolde dealers staan tot uw dienst voor advies, verkoop en inbouw. De serviceorganisatie zorgt ervoor dat de hoogwaardige producten op de juiste wijze worden gemonteerd, onderhouden en gerepareerd.